



SmartBank PRO

- **Advanced Split Charging System for large systems & professional users**
- **Manual adjustment of split charge parameters or computer programming free software.**
- **Full Split Charge features for up to 3 batteries**
- **Sealed and Ignition Protected contactor**
- **Rated at up to 200A continuous 12/24V**
- **8 programmable inputs/outputs**
- **Datalogging functionality**

SmartBank PRO is engineered to be the most advanced standalone split charging system available.

DSP Monitoring: To ensure precise activation/deactivation of split charging, all sensed voltages are run through a Digital Signal Processor. This removes spikes and electrical noise that confuse conventional combiners and VSRs.

Full control for 2 or 3 battery banks: Designed for 2 battery or 3 battery systems, SmartBank PRO's Connect Voltage, Connect Time Delay, Disconnect Voltage and Disconnect Time Delay are independently programmable for each battery. This allows full control and accurate power sharing across all batteries. Contactors are rated at 200A continuous and are sealed for use in wet and Ignition Protected environments.

Programmable Inputs/Outputs: 8x programmable inputs and alarm outputs provide complete integration of SmartBank PRO into your electrical system. You can add low voltage alarms, interlocks, additional Emergency Parallel switches (for say dual command station boats or ambulances) etc. When installed alongside a Merlin PowerGuard product, automatic flat battery protection reset from SmartBank PRO can be achieved. Other programming features can be added; For example, on a 3 battery system, Emergency Parallel only between say batteries 2 and 3 or separate emergency parallel switches required for between 1 & 2 and 2 & 3.

Charge Prioritising: SmartBank PRO allows you to configure and prioritize split charging. For example, prioritize charge from Battery 1 to Battery 2 and then to Battery 3, or from Battery 1 to Battery 2 and 3 at the same time.

Datalogging Functions: Merlin Programming Software incorporates datalogging functions that monitor SmartBank PRO while its operating on a vehicle/boat. This provides detailed battery voltage information allowing you to understand, program and control power balance across the system.

SmartGauge Interface: SmartBank PRO may be interfaced to SmartGauge to provide remote control and battery monitoring functions. Extra split charge functions include: Display of split charge status, emergency parallel from panel, Engine Priority Charge Mode & on screen Programming.

Works out of the box: SmartBank PRO will work with one (2 battery) or two (3 battery) contactors. Connect/Disconnect voltage can be manually adjusted using trim pots. Supplied with CPU, contactor(s), wiring & Emergency Parallel switch. Optional Programming Kit allows full access to additional features.



200A IP66 Rated Split Charge Contactor

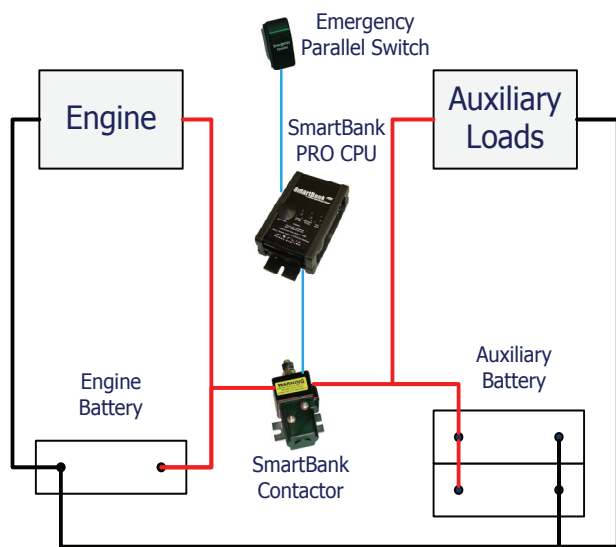


Emergency Parallel Switch

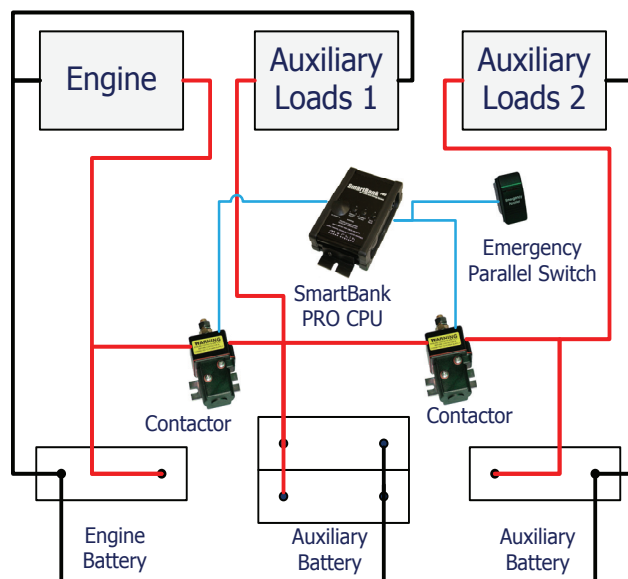


Interfaces with SmartGauge Battery Monitor (Page 34)

Installation Example: 2 Battery System



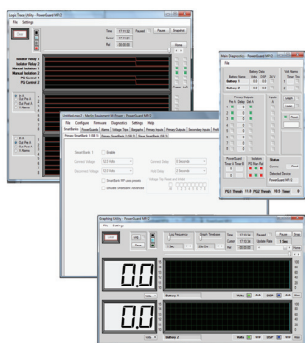
Installation Example: 3 Battery System



12V Models			24V Models	
Part #	04-8011	04-8012	04-8013	04-8014
Number Of Batteries	2	3	2	3
Contactor Current Continuous	200A			
Contactor Current 5 mins	250A			
Contactor Current Cranking	725A			
Power Consumption	<10mA		<6mA	
CPU Dimensions LxWxH (inch)	68x110x32mm (2.67x4.33x1.26)			
CPU Weight ex cables (lbs)	178g (0.39 lbs)			
Contactor Dimensions LxWxH (inch)	91x50x39mm (3.59x1.97x1.54)			
Contactor Weight (lbs)	375g (0.83 lbs)			
Compliance	EMC 2002/95/EC, CE, e-mark*, ISO-7637-2, SAE J1171, RoHS			

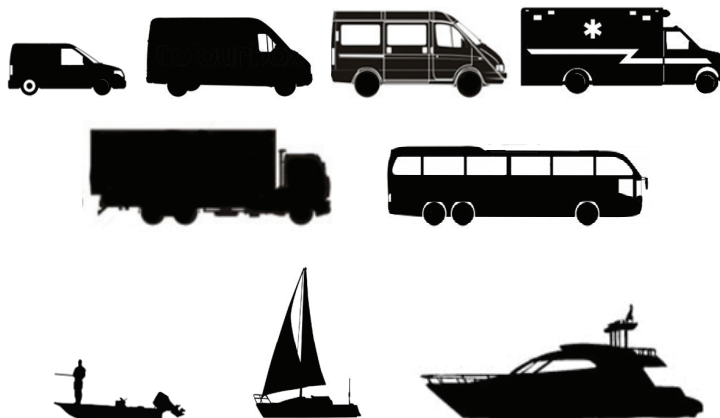
*exempted from 72/245/EEC as amended by 2006/28/EC - EAG175488

PC Programming Kit



PC Programming Kit (works with PowerGuard PRO, SmartBank PRO & SmartGuard COMBI) allows detailed and batch programming of inputs/outputs, alarms plus datalogging. Part #: 04-8060

Recommended Applications:



OEM Versions & Larger Contactors Available On Request.