

Art.No.	Type
196-448-205	FIX wall fixture. GU10. Clear PC-glass. Hot galvanized steel.
196-448-305	FIX wall fixture. GU10. Clear PC-glass. Solid copper.
196-448-x05*	FIX wall fixture. GU10. Clear PC-glass. Powder coated.*

Recommended Light Sources:

982-30-05-03	Philips CorePRO LEDspotMV ND 4,6-50W. GU10. 36D. 15000h. 370Lm. 3000K.
982-30-05-04	Philips CorePRO LEDspotMV ND 4,6-50W. GU10. 36D. 15000h. 390Lm. 4000K.

Accessories:

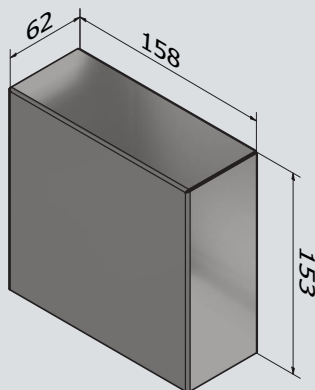
830-12-N-11-2	161x30mm pole f/FIX-FELIX. 1,14/0,62M f/burial. Hot galvanized steel.
830-12-N-11-3	161x30mm pole f/FIX-FELIX. 1,14/0,62M f/burial. Solid copper.
830-12-N-11-x*	161x30mm pole f/FIX-FELIX. 1,14/0,62M f/burial. Powder coated.*
999husnr.	House number. (When purchasing a minimum of 20 pcs.)

* Powder coated: Standard colors are Anthracite RAL7016, Black RAL9005. Other RAL colors on request with extra price. Find the final Art.No. by replacing "x" with the color code. Anthracite: x=5, Black: x=9, Special: x=P.

Note: See the back plate/mounting sketch under the individual product on davidsuperlight.com

Key features:

- 10 year anti-corrosion warranty. (Hot galvanized)
- 10 year reorder warranty.
- Easy light source change and great flexibility with retrofit LED.



David®

davidsuperlight.dk 

