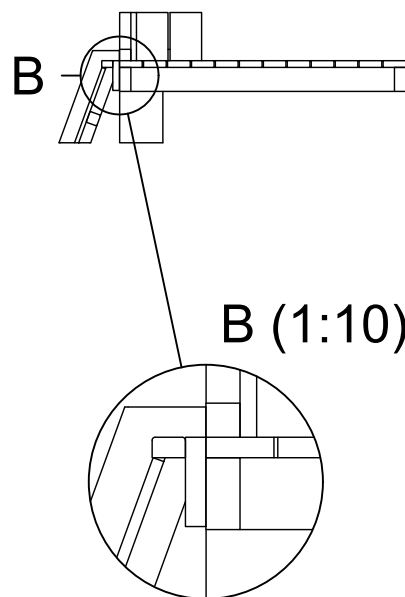
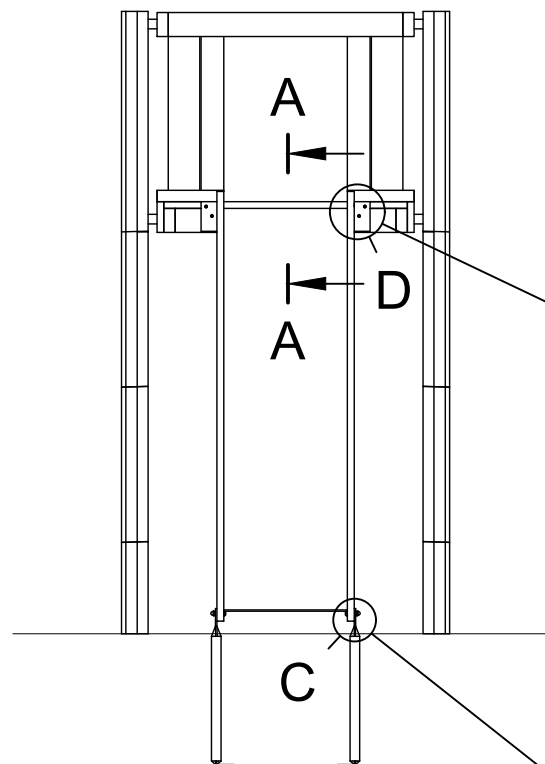


A-A (1:30)



B (1:10)



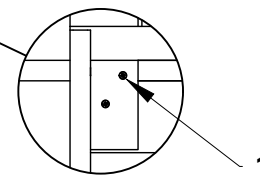
A

A

D

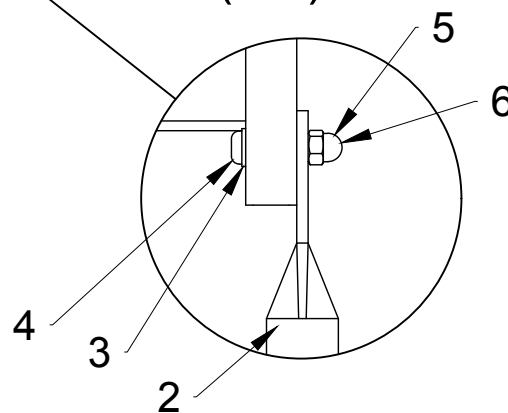
C

D (1:10)



1

C (1:4)



4

3

2

5

6

Parts list

POS	PART. NO	NAME/DIMENSION
1	LE 16185	6x60mm Countersunk
2	LE 15116	Bracket
3	LE 16156	M10 - Ø20
4	LE 16084	M10x40mm A
5		Sealtite / Locktite
6	LE 16054	M10 A2 DIN 986