

2



6h



20,8 m²



6,6 x 4,2 x 3 m



~663 kg



>25



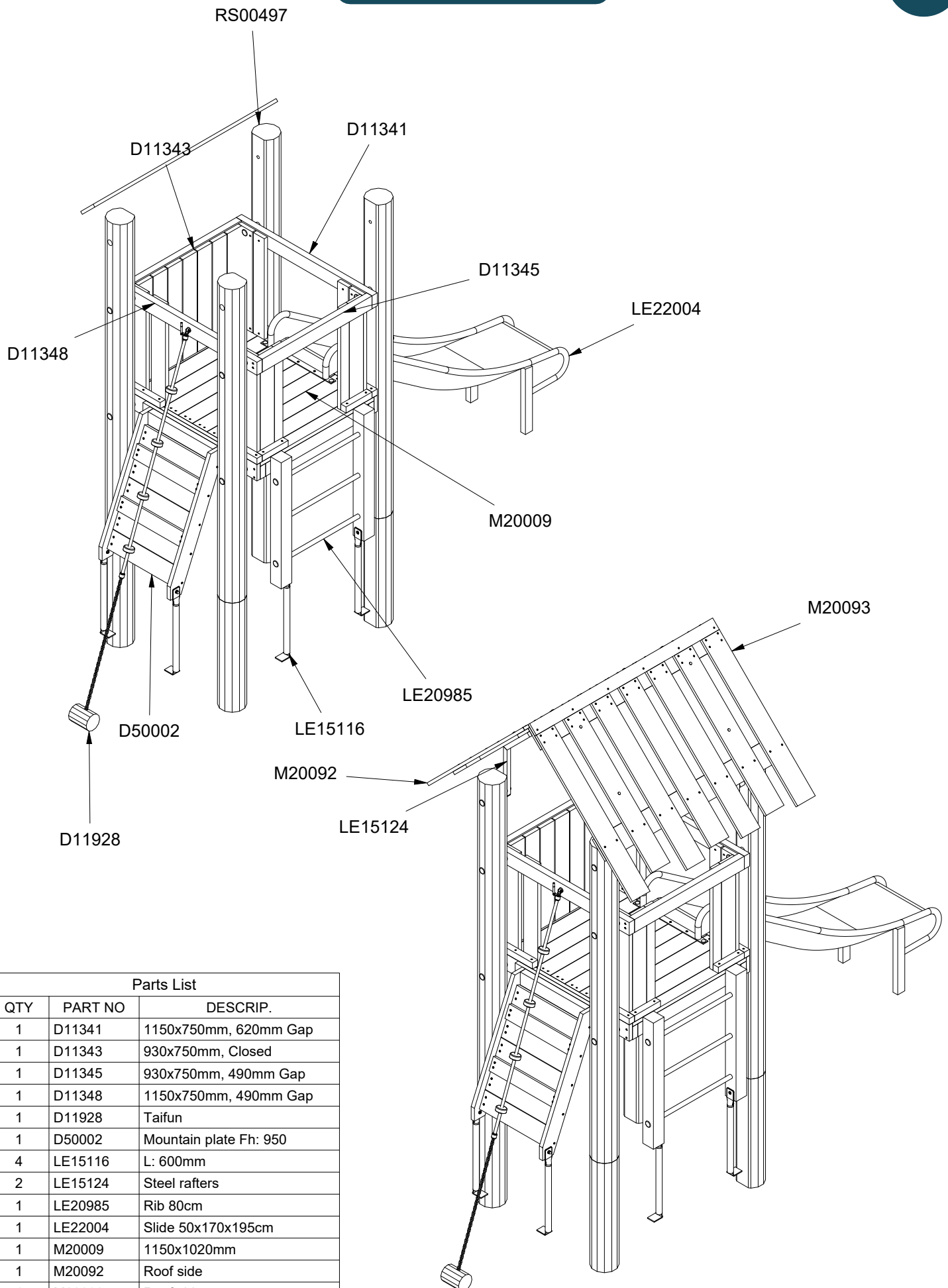
~0,16 m²



Ø16/18 x 310 cm

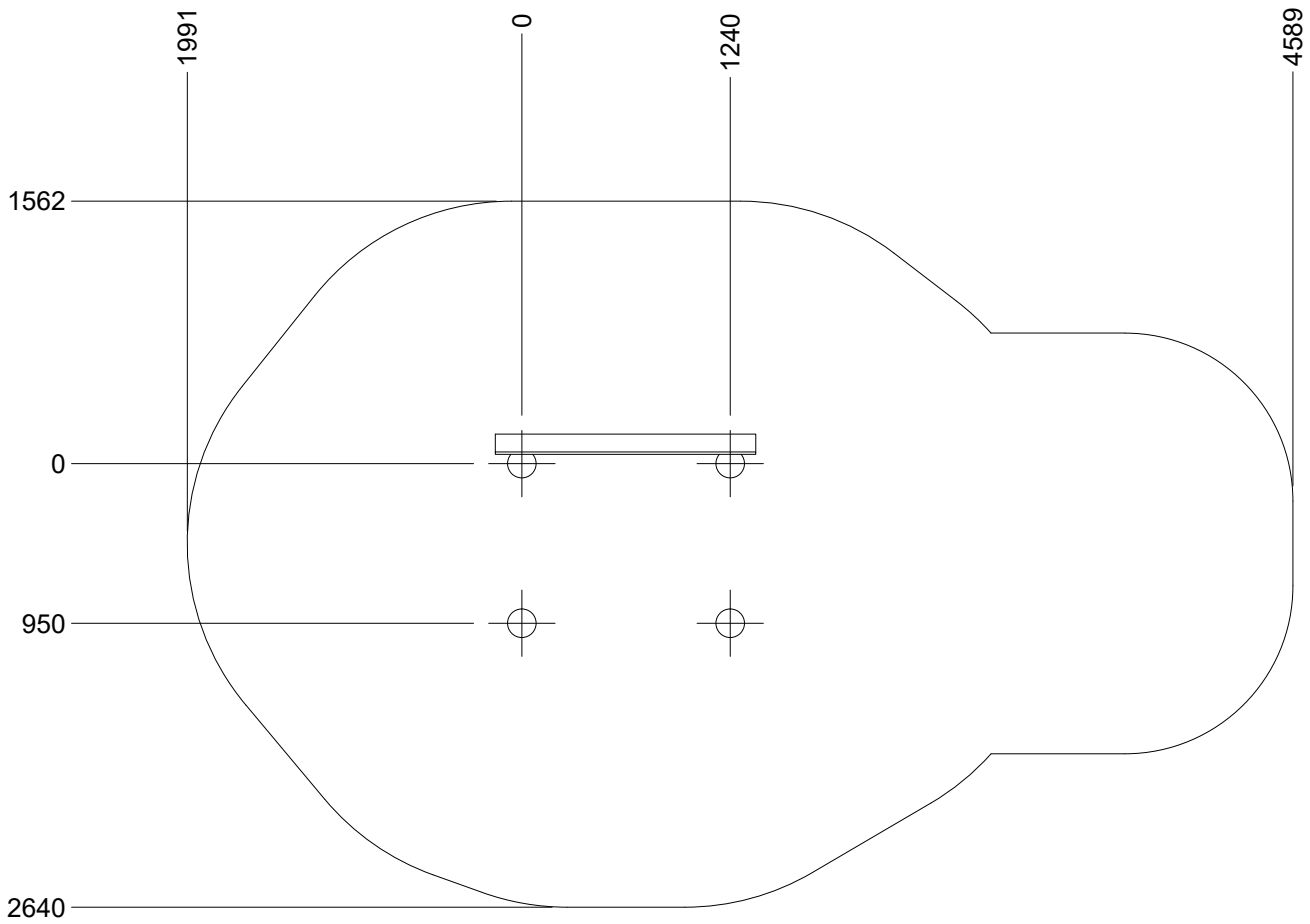
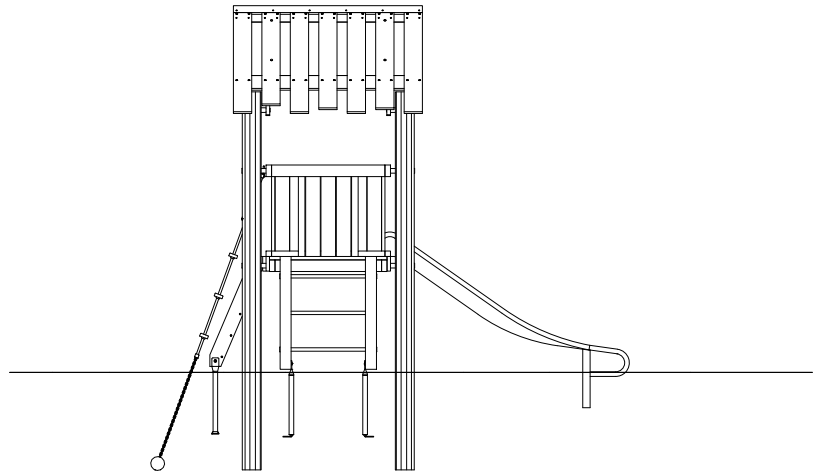
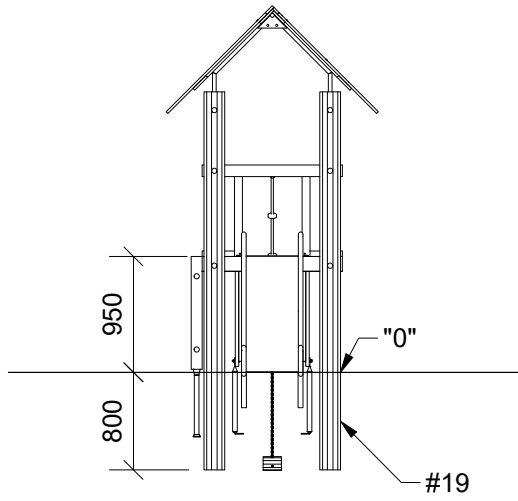


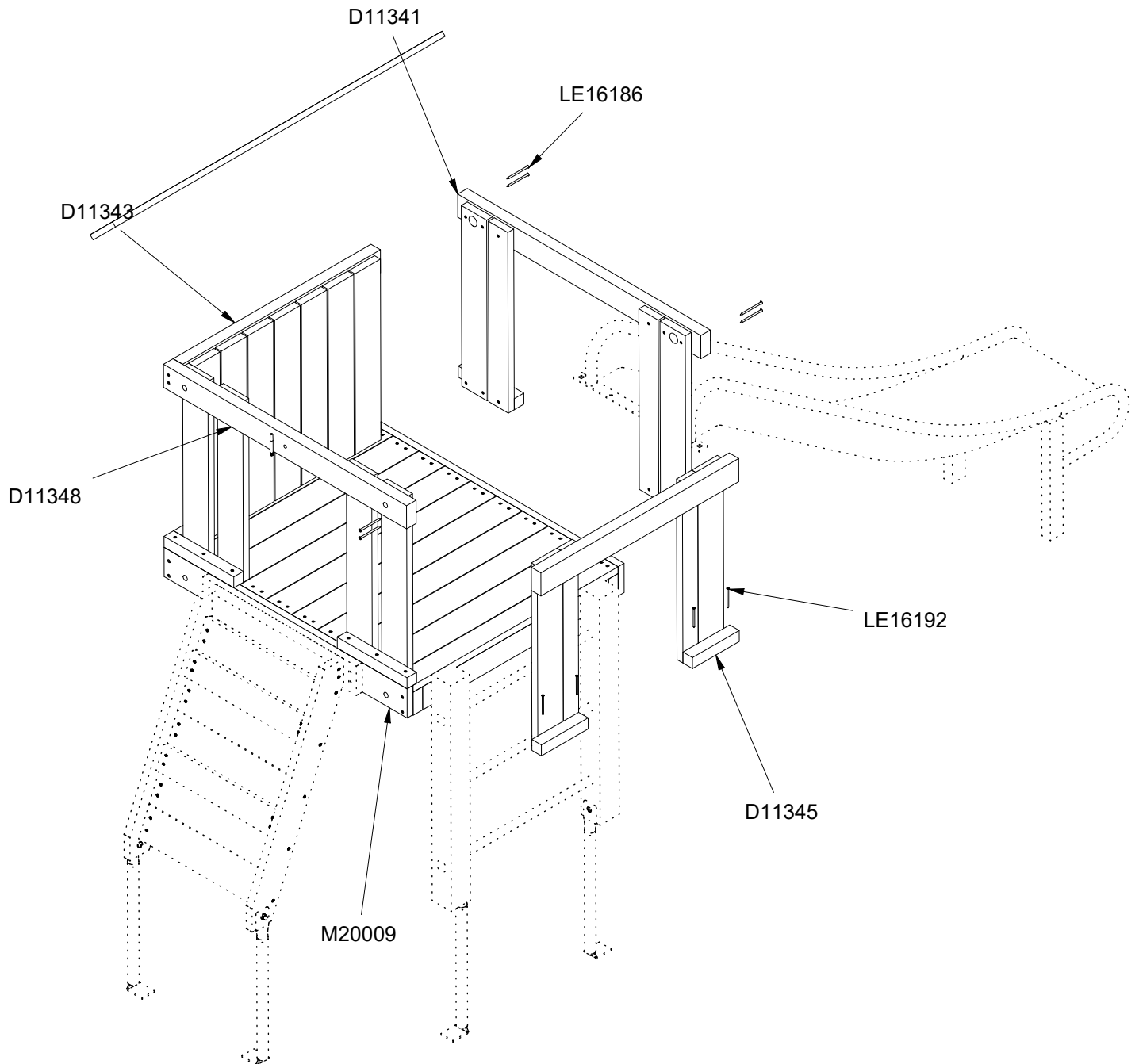
96 kg



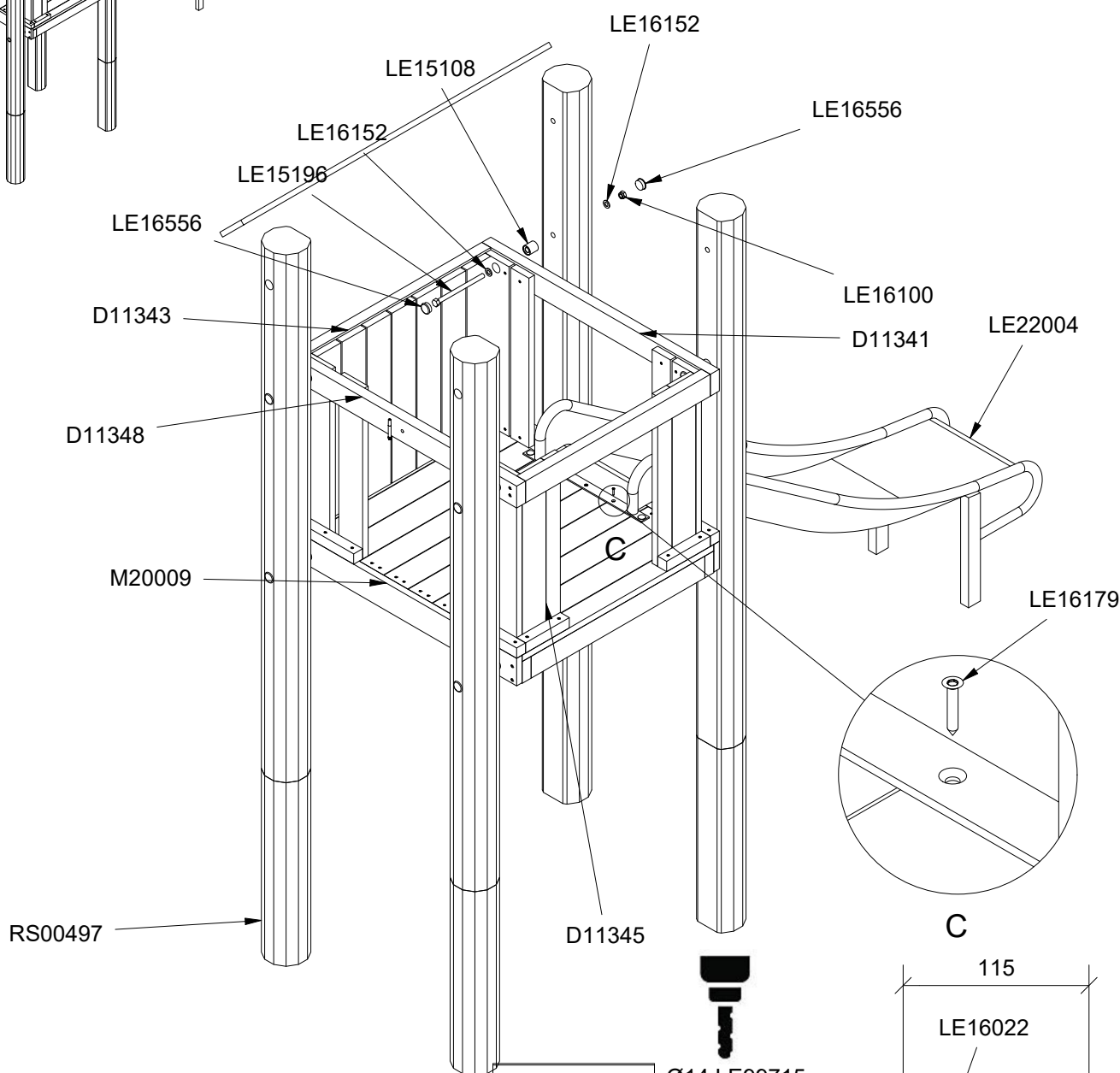
Parts List

QTY	PART NO	DESCRIP.
1	D11341	1150x750mm, 620mm Gap
1	D11343	930x750mm, Closed
1	D11345	930x750mm, 490mm Gap
1	D11348	1150x750mm, 490mm Gap
1	D11928	Taifun
1	D50002	Mountain plate Fh: 950
4	LE15116	L: 600mm
2	LE15124	Steel rafters
1	LE20985	Rib 80cm
1	LE22004	Slide 50x170x195cm
1	M20009	1150x1020mm
1	M20092	Roof side
1	M20093	Roof side
4	RS00497	Ø160-180



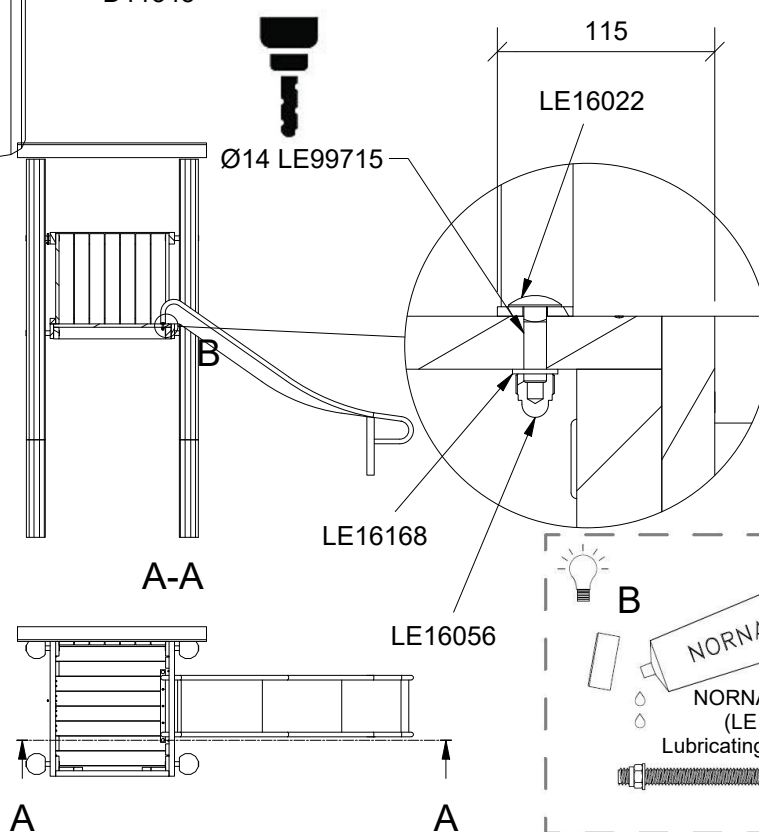


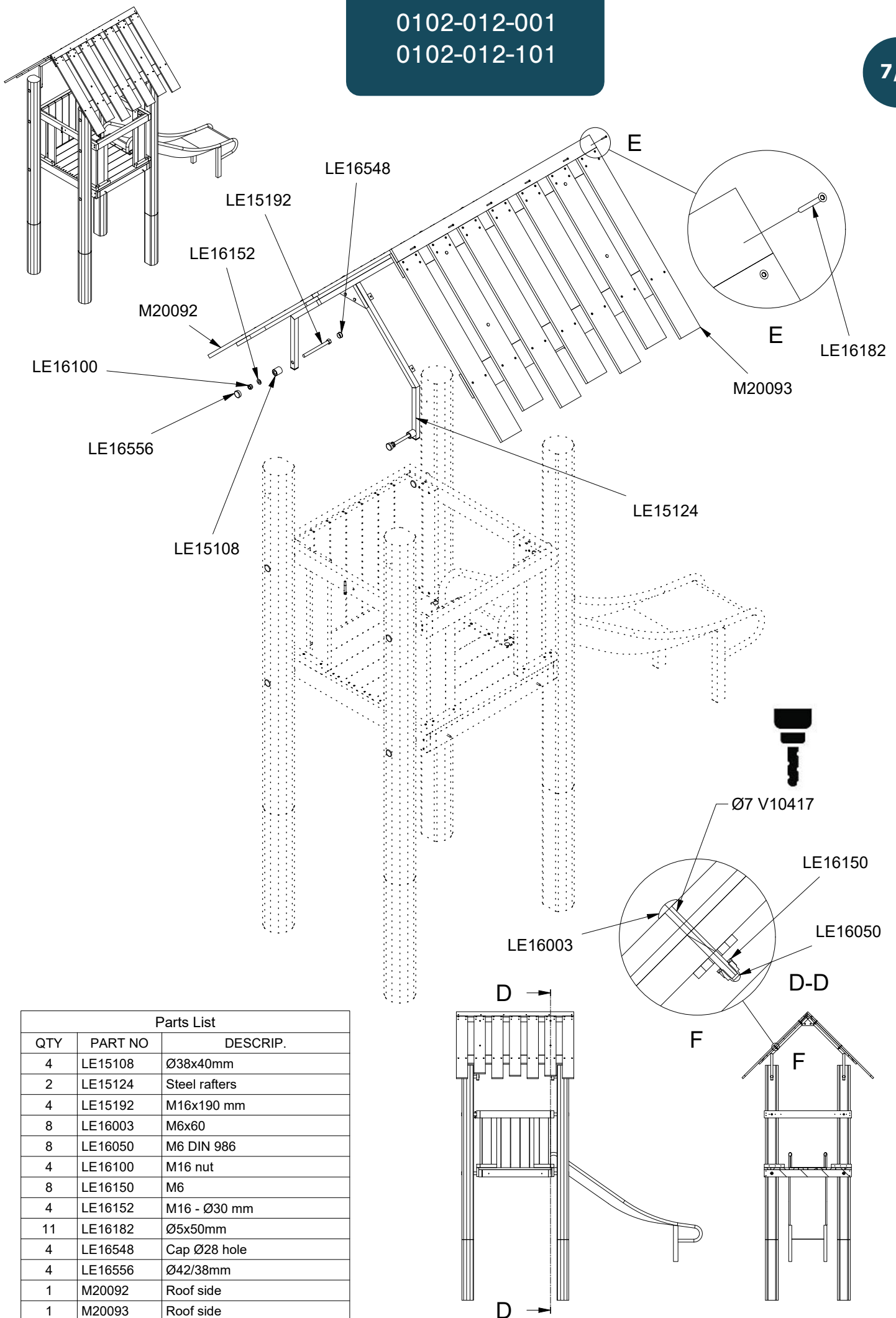
Parts List		
QTY	PART NO	DESCRIP.
1	D11341	1150x750mm, 620mm Gap
1	D11343	930x750mm, Closed
1	D11345	930x750mm, 490mm Gap
1	D11348	1150x750mm, 490mm Gap
8	LE16186	6x100 Ch
19	LE16192	5x80mm
1	M20009	1150x1020mm



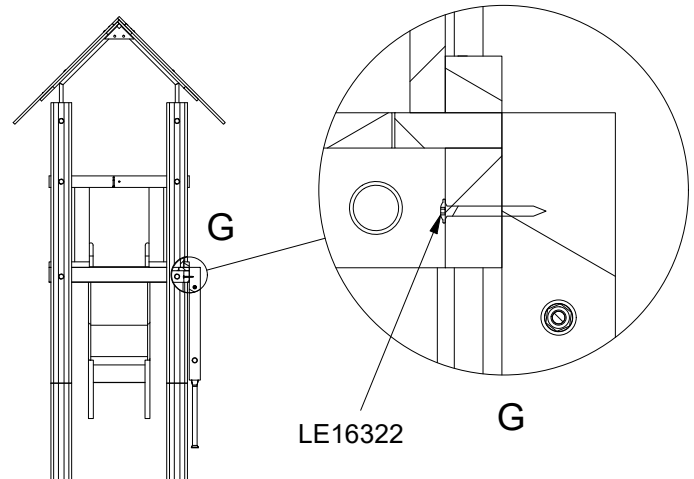
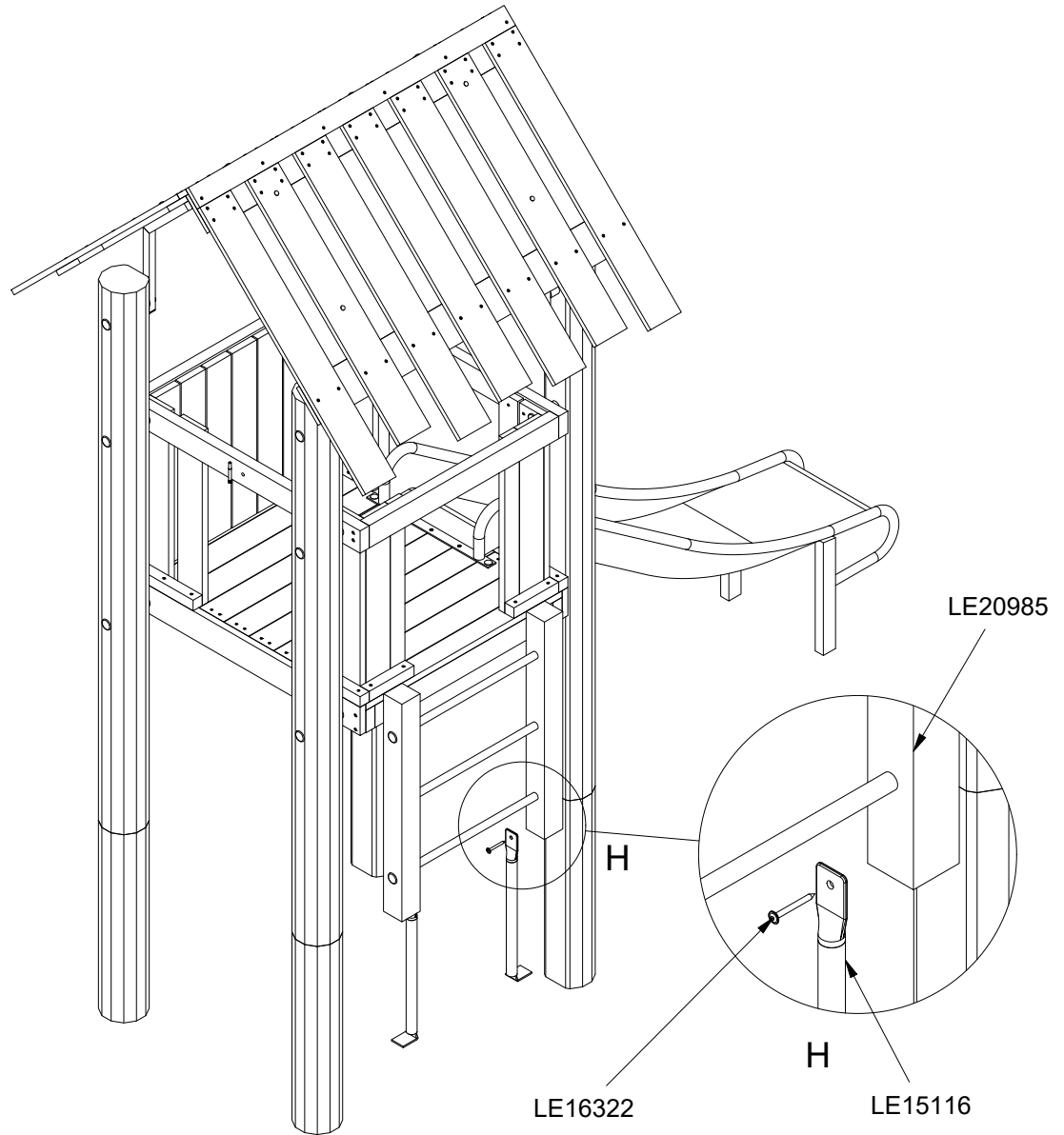
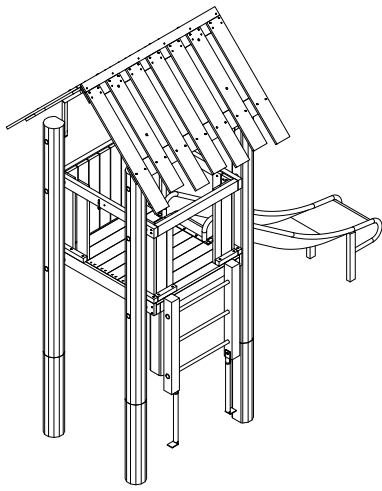
Parts List

QTY	PART NO	DESCRIP.
1	D11341	1150x750mm, 620mm Gap
1	D11343	930x750mm, Closed
1	D11345	930x750mm, 490mm Gap
1	D11348	1150x750mm, 490mm Gap
8	LE15108	Ø38x40mm
8	LE15196	M16x230 mm
2	LE16022	M12x40 mm
2	LE16056	M12 cap nut
8	LE16100	M16 nut
16	LE16152	M16 - Ø30 mm
2	LE16168	M12 - Ø24 mm
3	LE16179	Ø5x30mm Ch
16	LE16556	Ø42/38mm
1	LE22004	Slide 50x170x195cm
1	LE99715	Ø14mm, l=200/130mm
1	M20009	1150x1020mm
4	RS00497	Ø160-180





Parts List		
QTY	PART NO	DESCRIP.
4	LE15108	Ø38x40mm
2	LE15124	Steel rafters
4	LE15192	M16x190 mm
8	LE16003	M6x60
8	LE16050	M6 DIN 986
4	LE16100	M16 nut
8	LE16150	M6
4	LE16152	M16 - Ø30 mm
11	LE16182	Ø5x50mm
4	LE16548	Cap Ø28 hole
4	LE16556	Ø42/38mm
1	M20092	Roof side
1	M20093	Roof side
1	V10417	HSS lang Ø7mm L:156mm



Parts List		
QTY	PART NO	DESCRIP.
2	LE15116	L: 600mm
4	LE16322	Ø8x80 Dh
1	LE20985	Rib 80cm



