

2



4h



20 m²



5,5 x 5 x 2,3 m



~447 kg



>C25



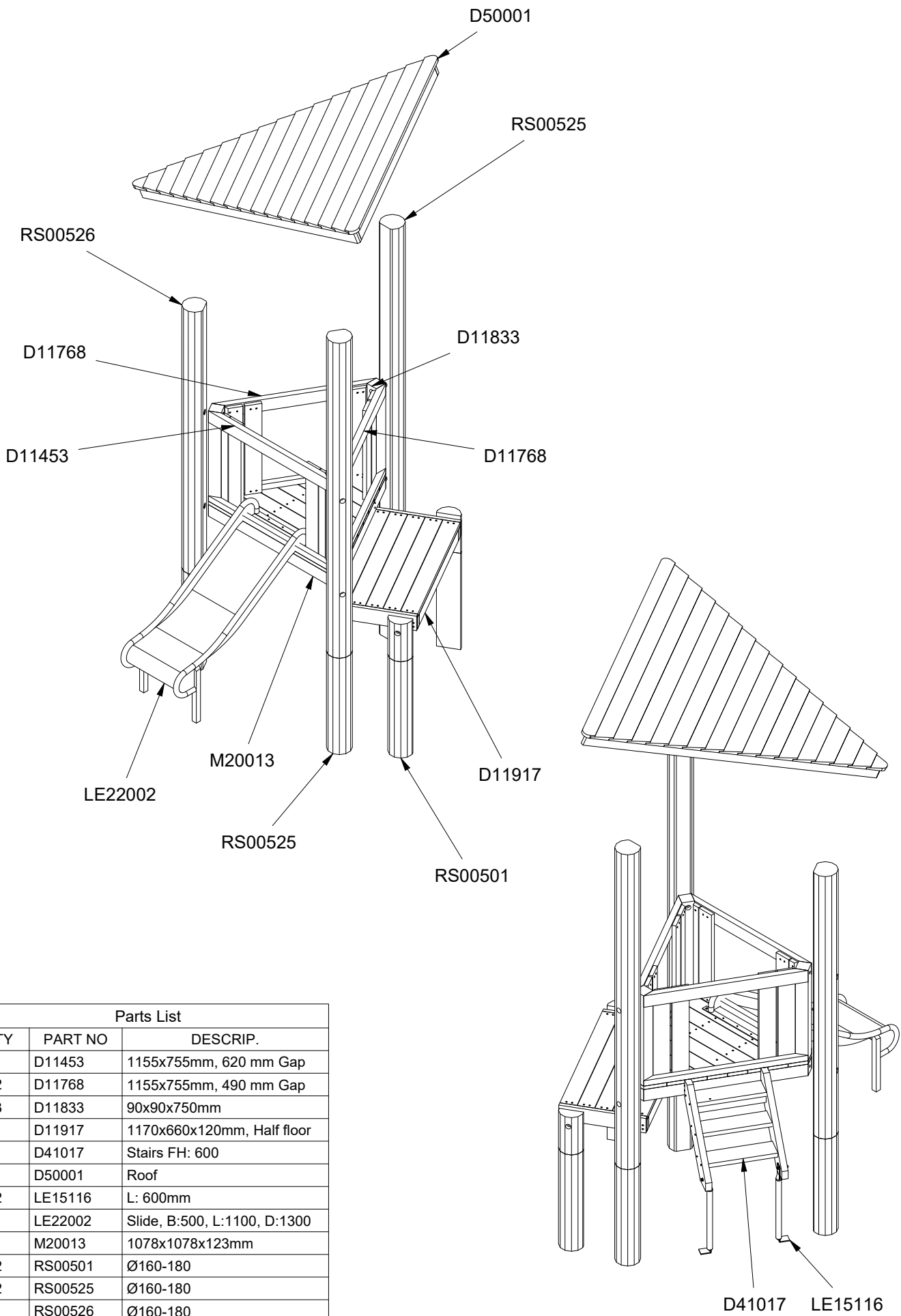
~0,27 m³

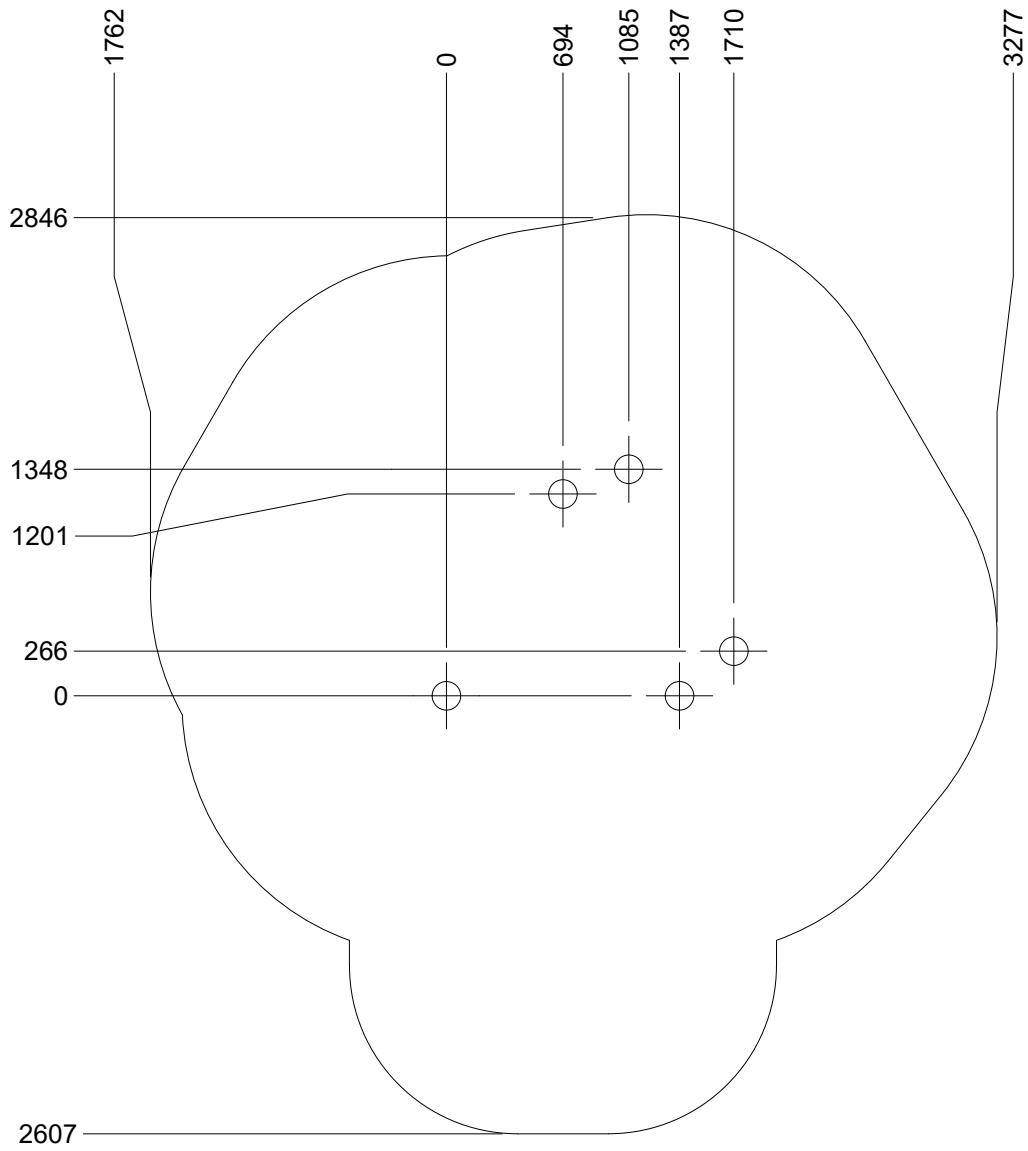
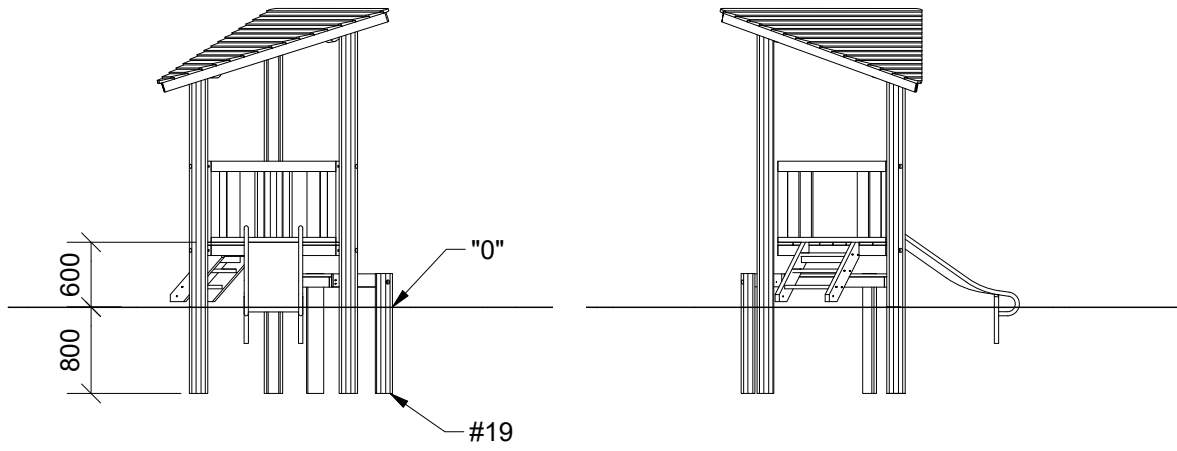


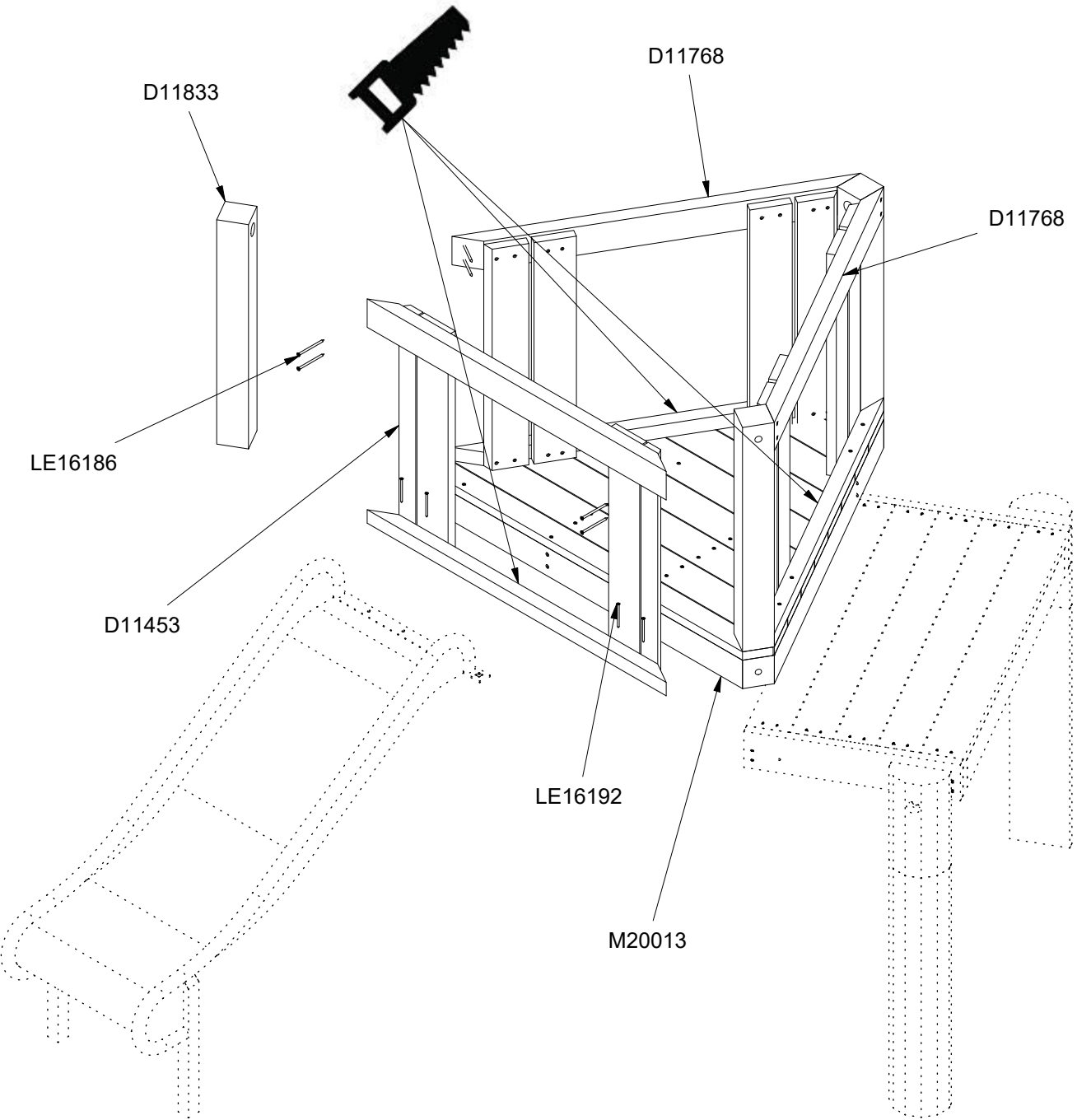
Ø16/18x342 cm



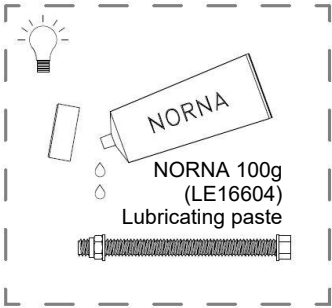
61 kg

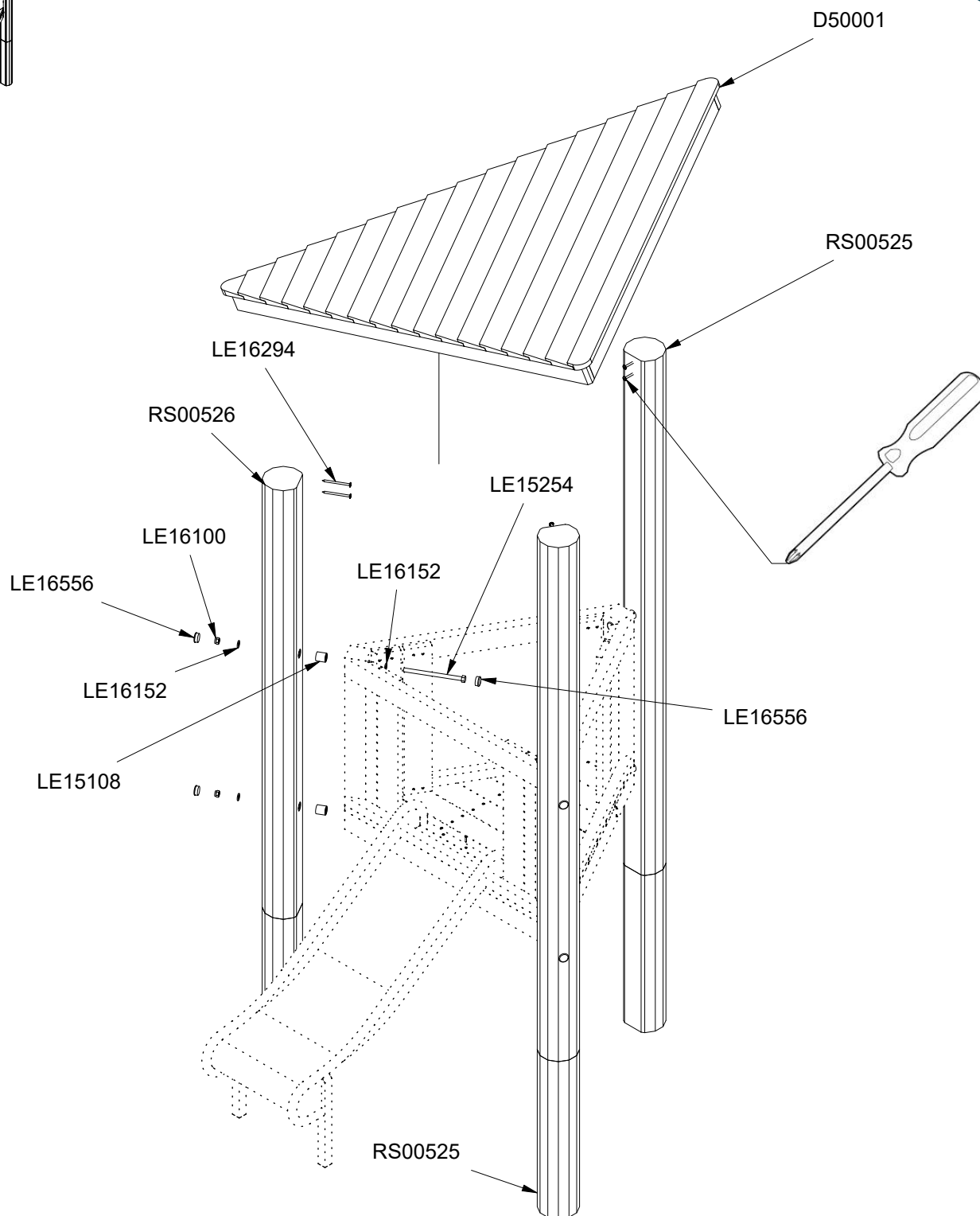
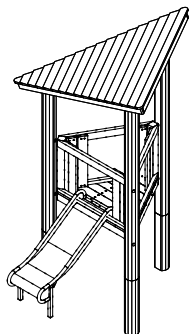






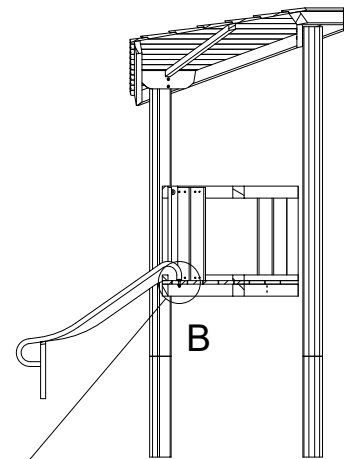
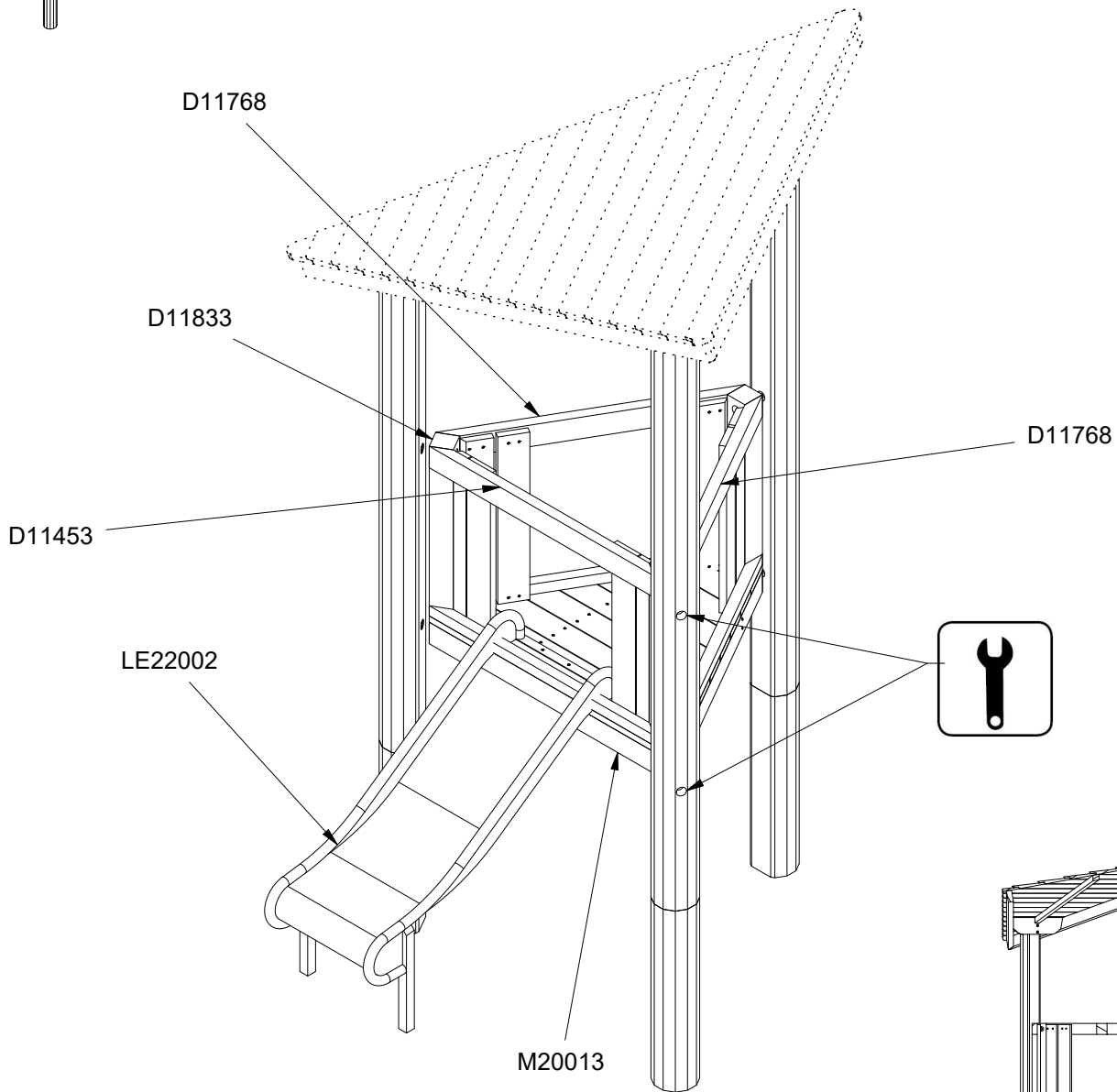
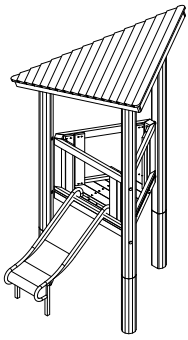
Parts List		
QTY	PART NO	DESCRIP.
1	D11453	1155x755mm, 620 mm Gap
2	D11768	1155x755mm, 490 mm Gap
3	D11833	90x90x750mm
12	LE16186	6x100 Ch
12	LE16192	5x80mm
1	M20013	1078x1078x123mm





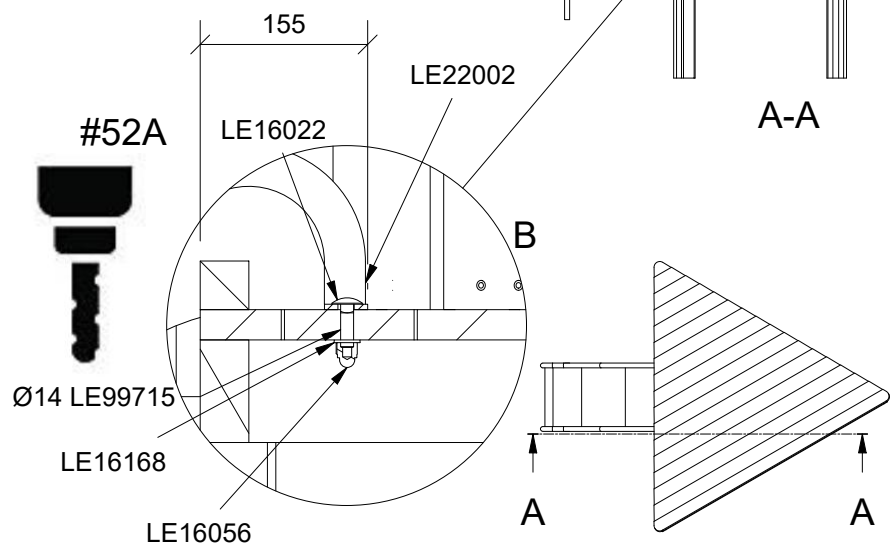
Parts List

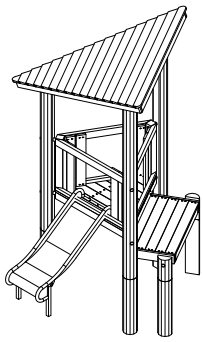
QTY	PART NO	DESCRIP.
1	D50001	Roof
6	LE15108	Ø38x40mm
6	LE15254	M16x250mm
6	LE16100	M16 nut
12	LE16152	M16 - Ø30 mm
6	LE16294	Ø8x120/80 mm
12	LE16556	Ø42/38mm
2	RS00525	Ø160-180
1	RS00526	Ø160-180



A-A

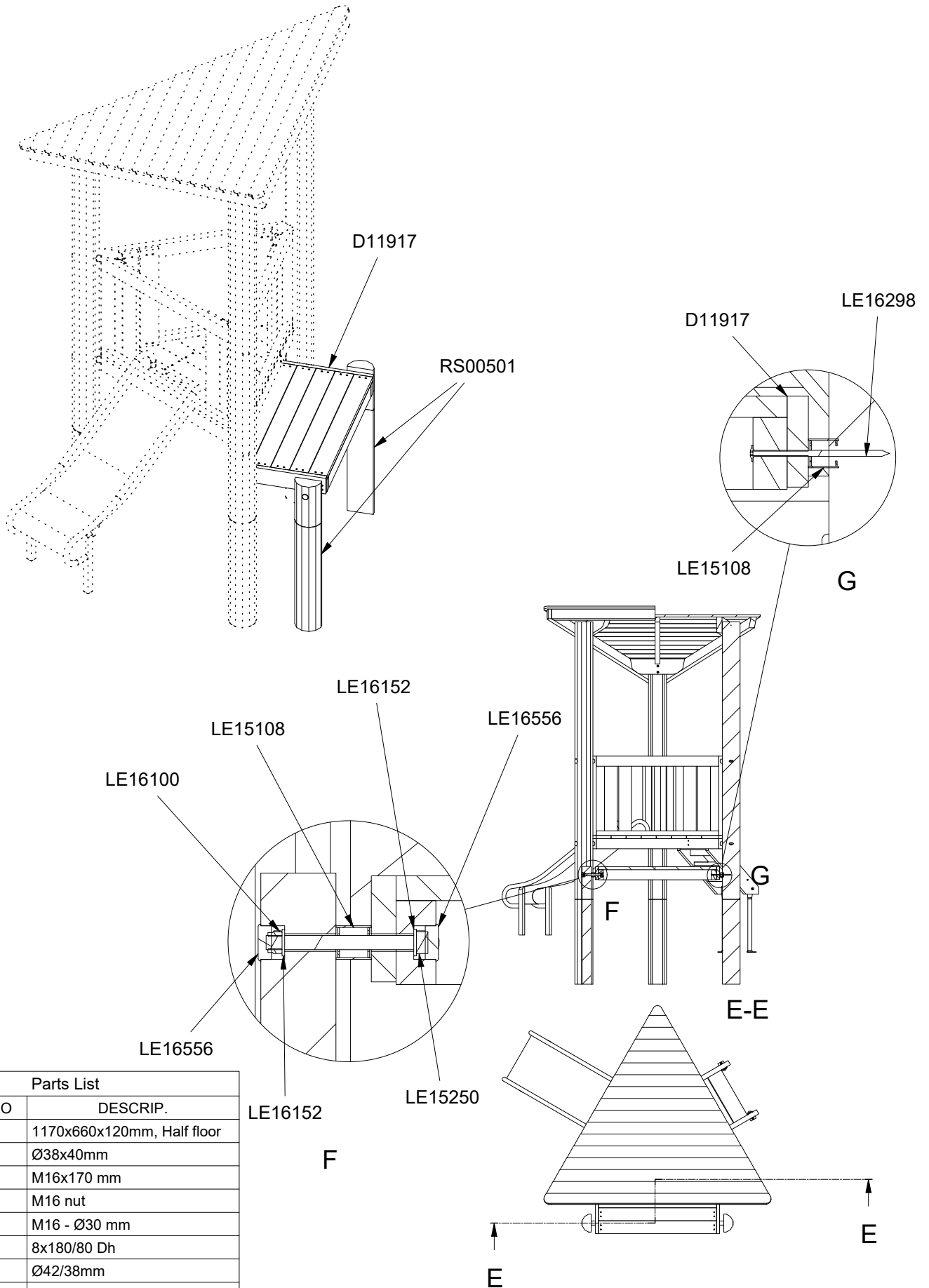
Parts List		
QTY	PART NO	DESCRIP.
1	D11453	1155x755mm, 620 mm Gap
2	D11768	1155x755mm, 490 mm Gap
3	D11833	90x90x750mm
2	LE16022	M12x40 mm
2	LE16056	M12 cap nut
2	LE16168	M12 - Ø24 mm
3	LE16179	Ø5x30mm Ch
1	LE22002	Slide, B:500, L:1100, D:1300
1	LE99715	Ø14mm, l=200/130mm
1	M20013	1078x1078x123mm





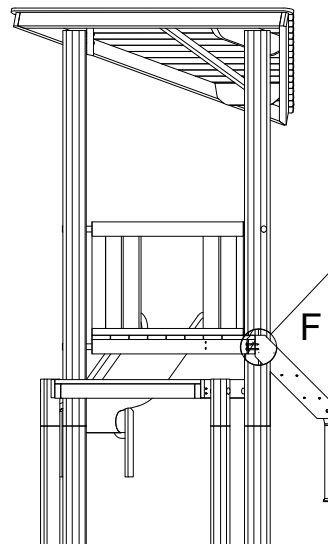
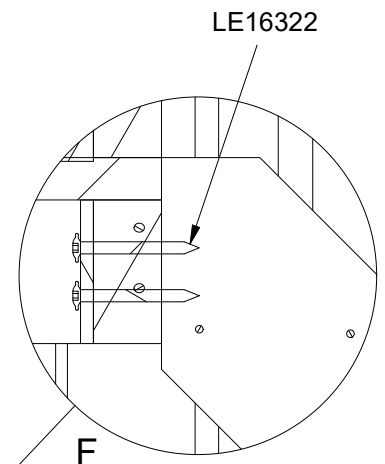
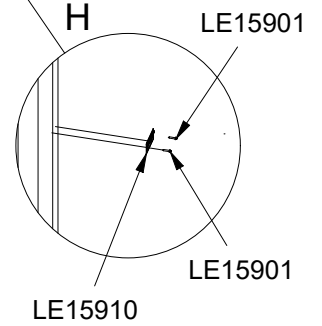
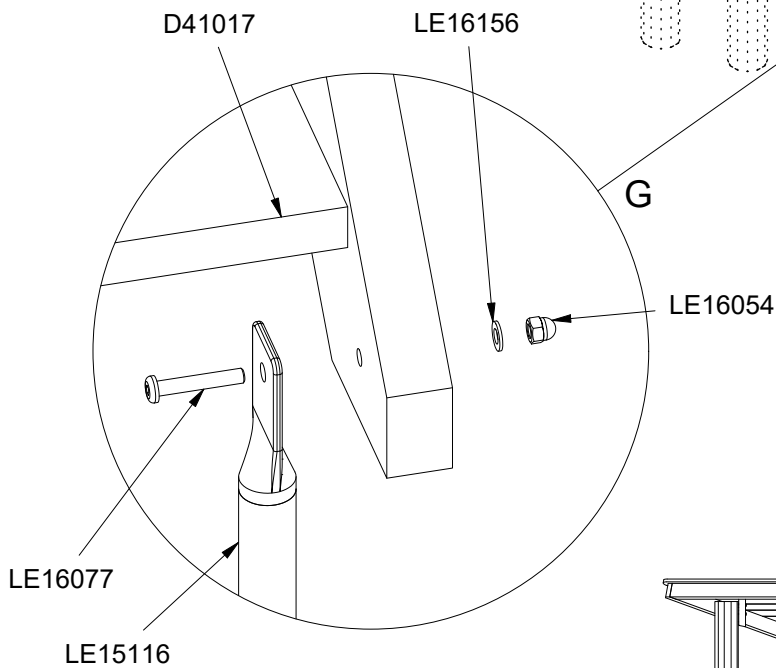
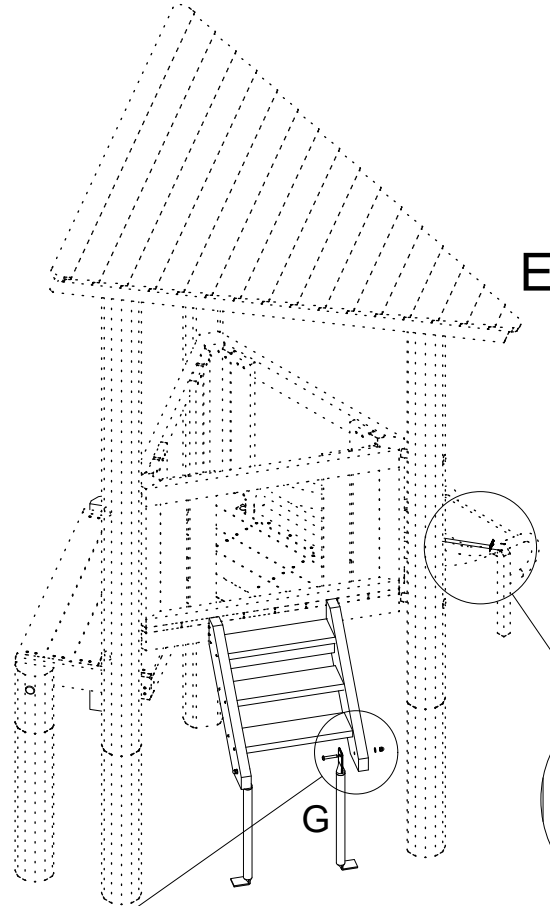
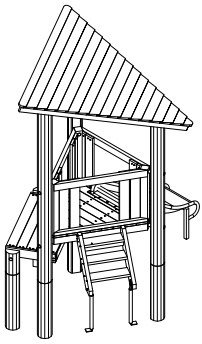
0102-013-001
0102-013-101

8/9



Parts List

QTY	PART NO	DESCRIP.
1	D11917	1170x660x120mm, Half floor
4	LE15108	Ø38x40mm
2	LE15250	M16x170 mm
2	LE16100	M16 nut
4	LE16152	M16 - Ø30 mm
2	LE16298	8x180/80 Dh
4	LE16556	Ø42/38mm
2	RS00501	Ø160-180



Parts List		
QTY	PART NO	DESCRIP.
1	D41017	Stairs FH: 600
2	LE15116	L: 600mm
2	LE15901	3x16, PH
1	LE15910	Name tag
2	LE16054	M10 cap nut
2	LE16077	Buttonhead 10x60mm
2	LE16156	M10-Ø20
4	LE16322	Ø8x80 Dh