

NORLEG

Kegle net

LE 20938

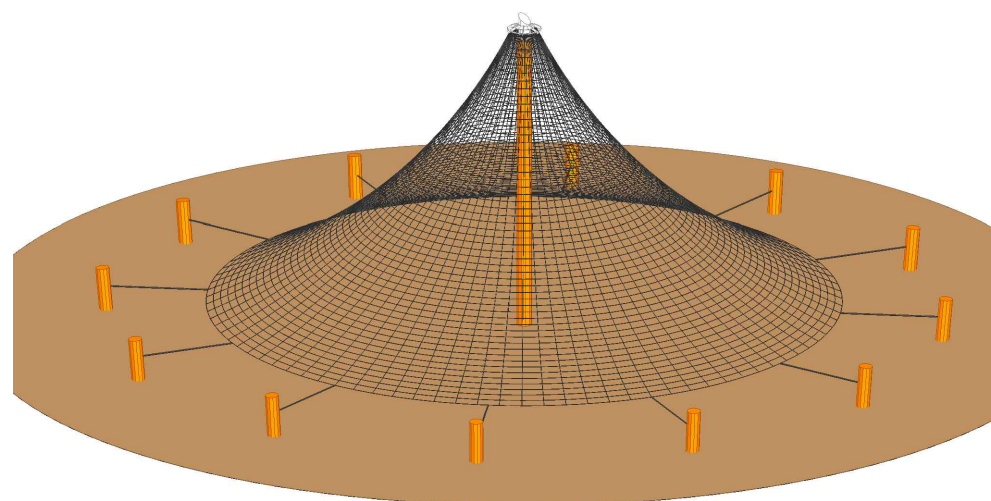
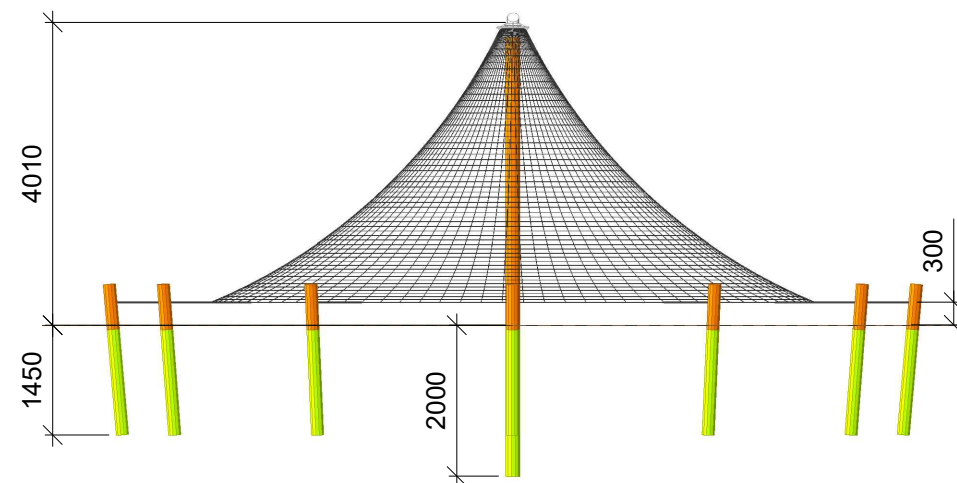
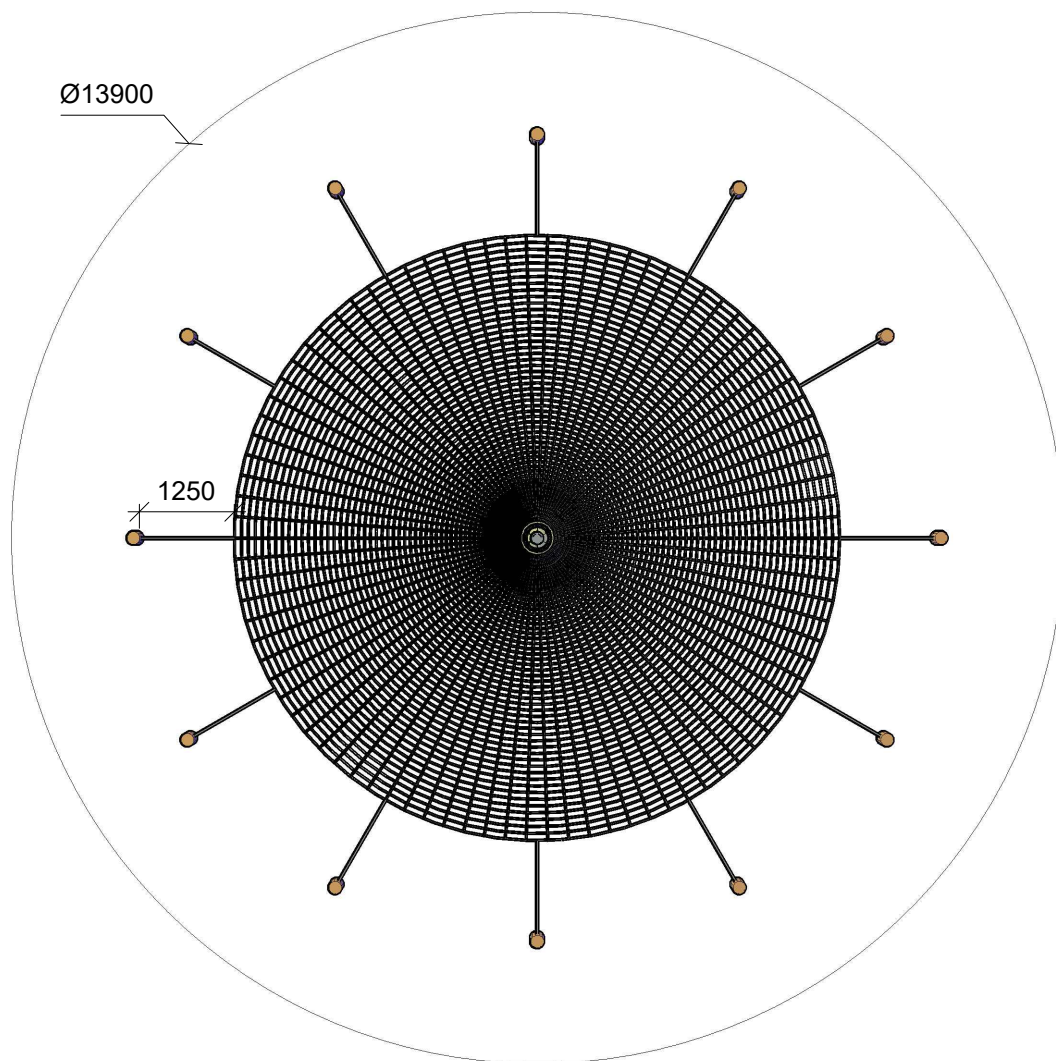
23.01.2007

REV. A:20.03.2018

< 600



≥ EN 1176

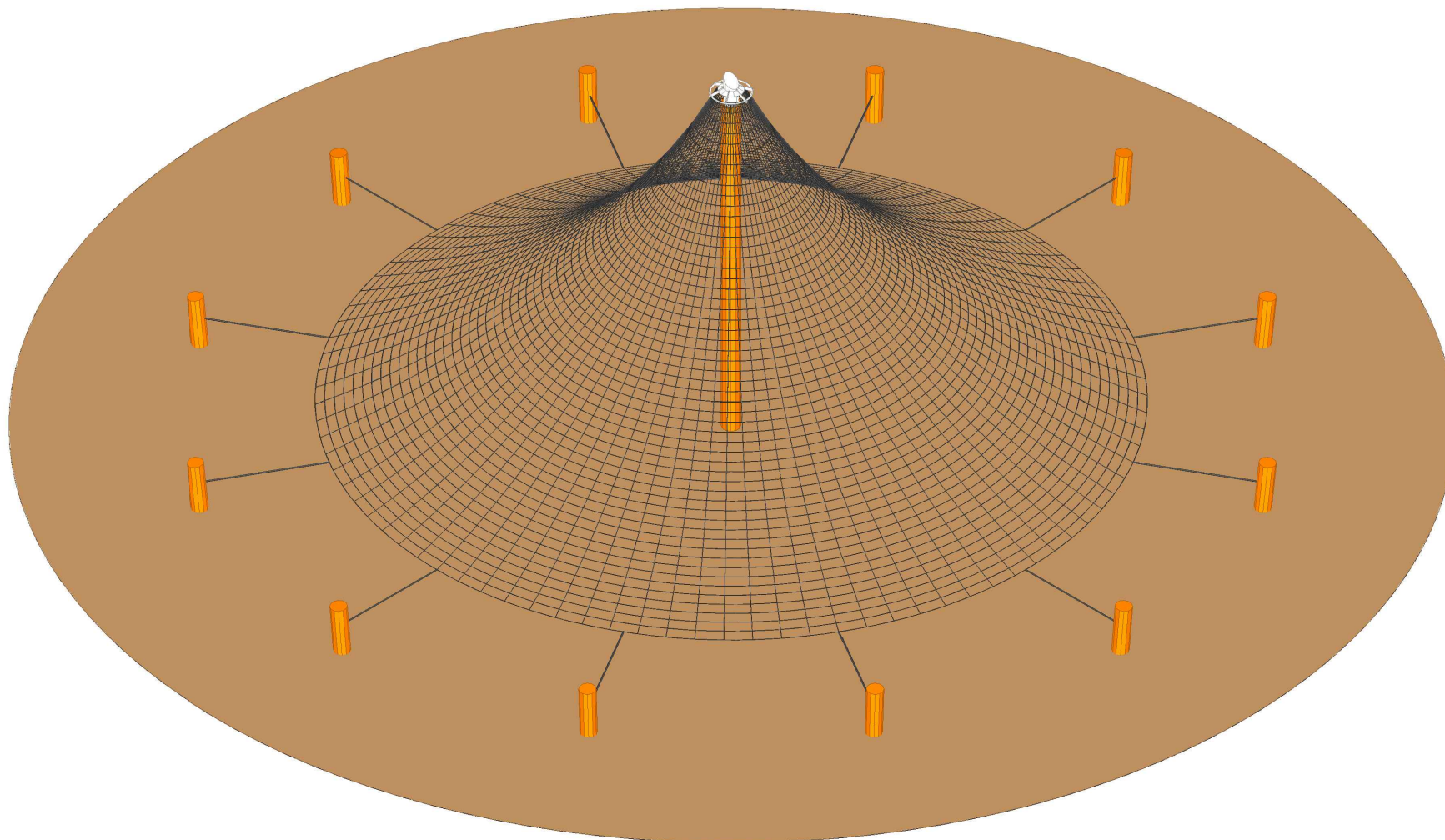


**NORLEG****Kegle net**

LE 20938

23.01.2007

REV. A:20.03.2018



NORLEG

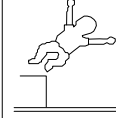
Kegle net

LE 20938

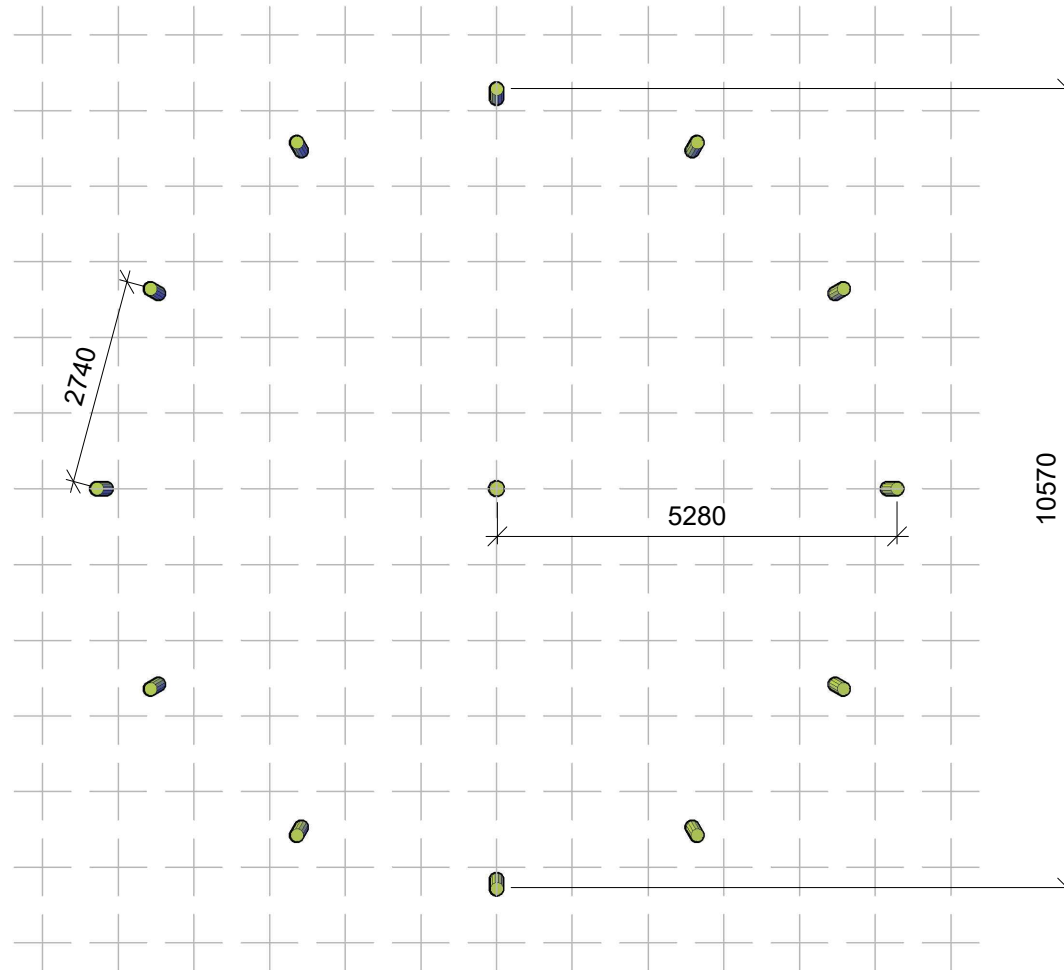
23.01.2007

REV. A:20.03.2018

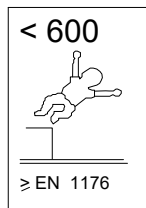
< 600



≥ EN 1176



<b>NORLEG</b>	
<b>Kegle net</b>	
LE 20938	
23.01.2007	REV. A:20.03.2018

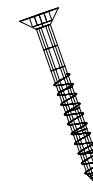


By assembly. Drilling and use of saw must be expected.

Dh = Disk head



Ch = Countersunk head

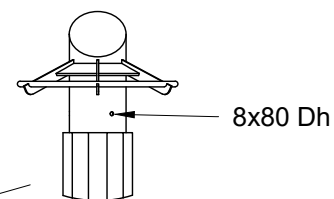


- Mont.

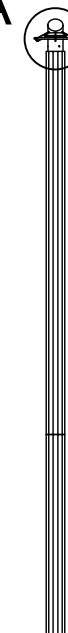
Mont.p. nr.

19  
22  
(3)

A (1:20)



A



Mrk.1

