

2



5h



22 m²



5,5 x 4,35 x 1,3 m



~194 kg



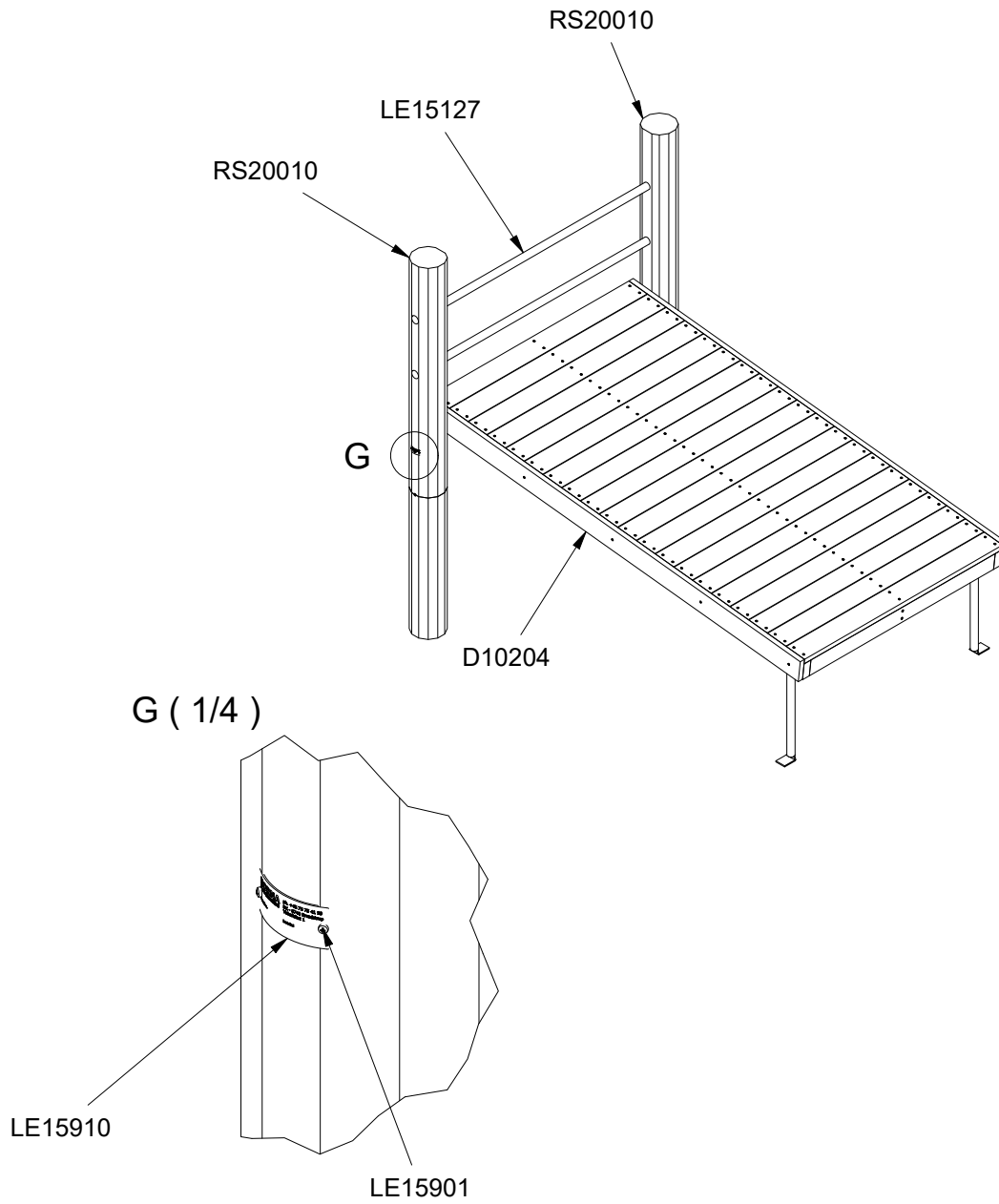
~0,15 m³



134x246x125cm

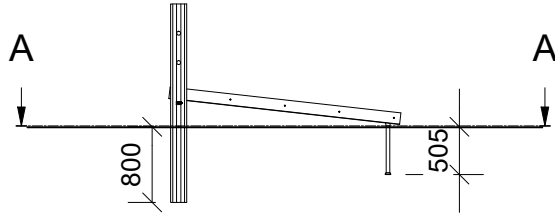


88 kg

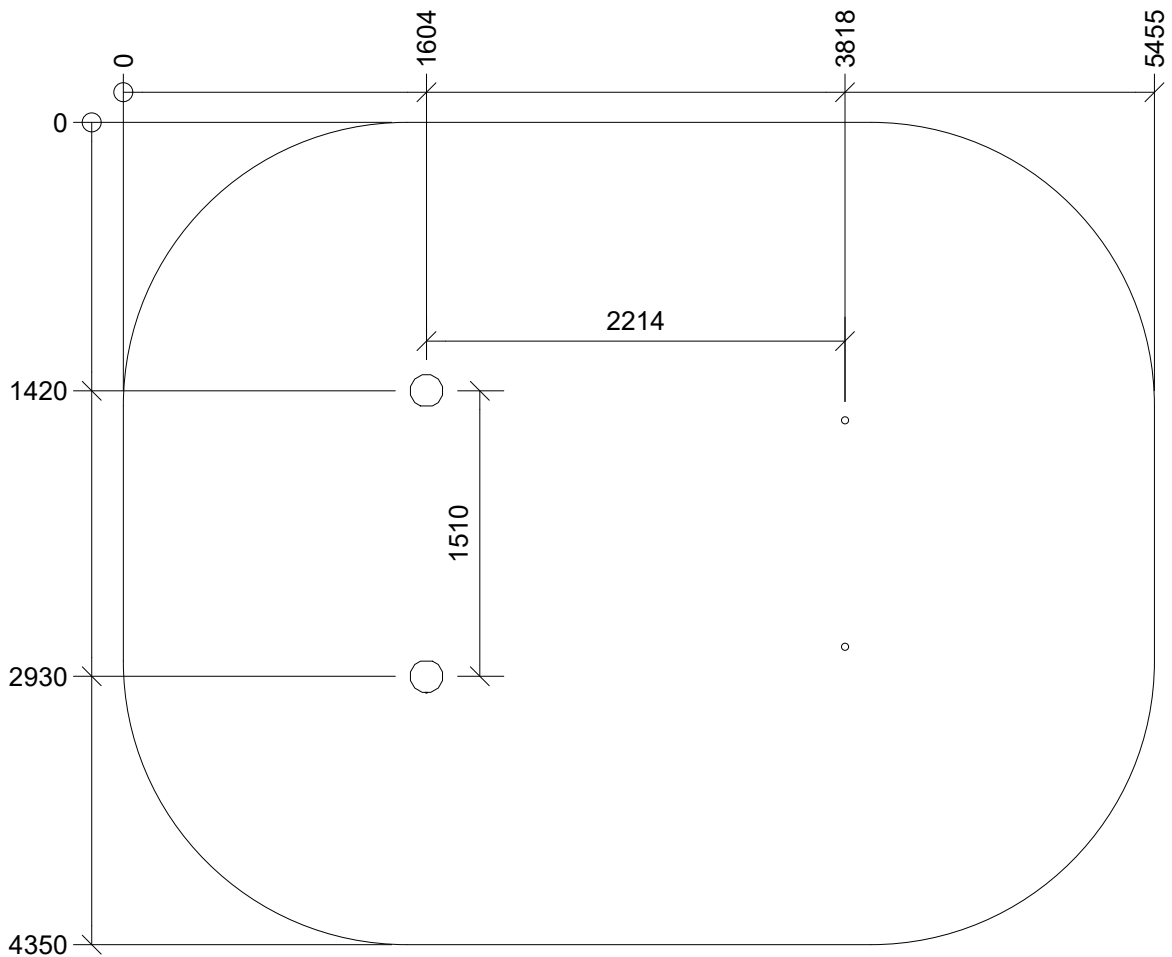


| Parts List | |
|------------|---------|
| QTY | PART NO |
| 1 | D10204 |
| 2 | LE15127 |
| 2 | RS20010 |

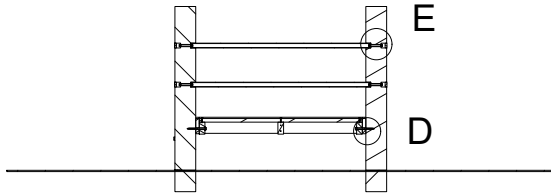
| Parts List - Fittings | | |
|-----------------------|---------|---------------------|
| QTY | PART NO | DESCRIP. |
| 2 | LE15116 | L: 600mm |
| 2 | LE15901 | 3x16, PH |
| 1 | LE15910 | Name tag |
| 4 | LE16153 | M10 - Ø29mm |
| 4 | LE16168 | M12 - Ø24 mm |
| 4 | LE16222 | M12 x 100 |
| 2 | LE16250 | M10x60mm hex screw |
| 2 | LE16258 | M10x140mm hex screw |
| 1 | LE16320 | 6x50 Dh |
| 4 | LE16556 | Ø42/38mm |



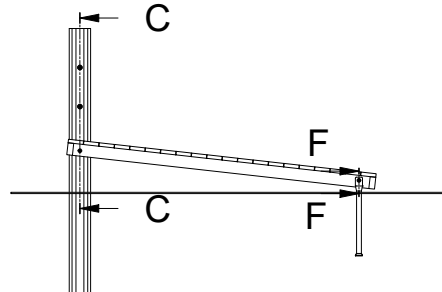
A-A (1/40)



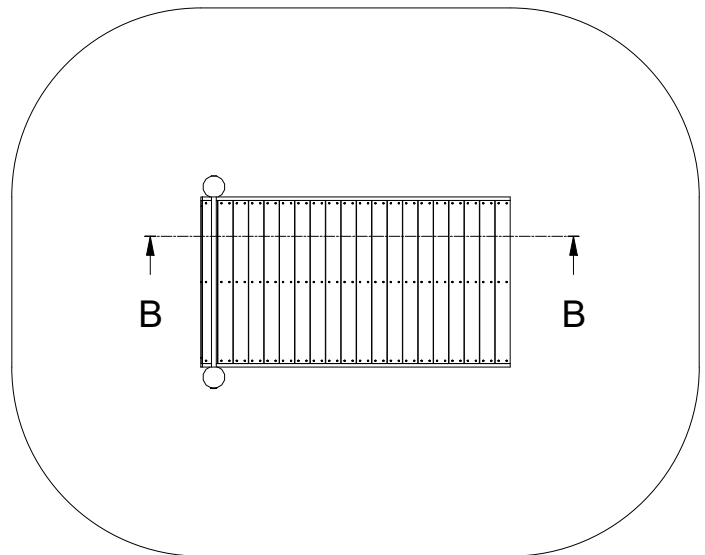
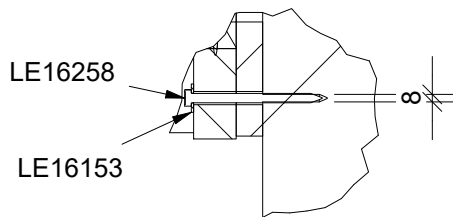
C-C (1/60)



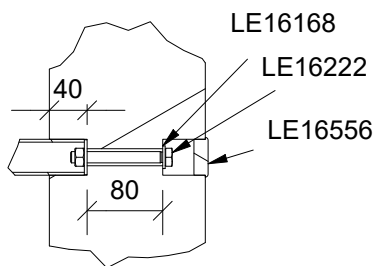
B-B (1/60)



D (1/8)



E (1/8)



F-F (1/8)

