

2



1h

15,4 m²

4,6 x 3,7 x 1,7 m



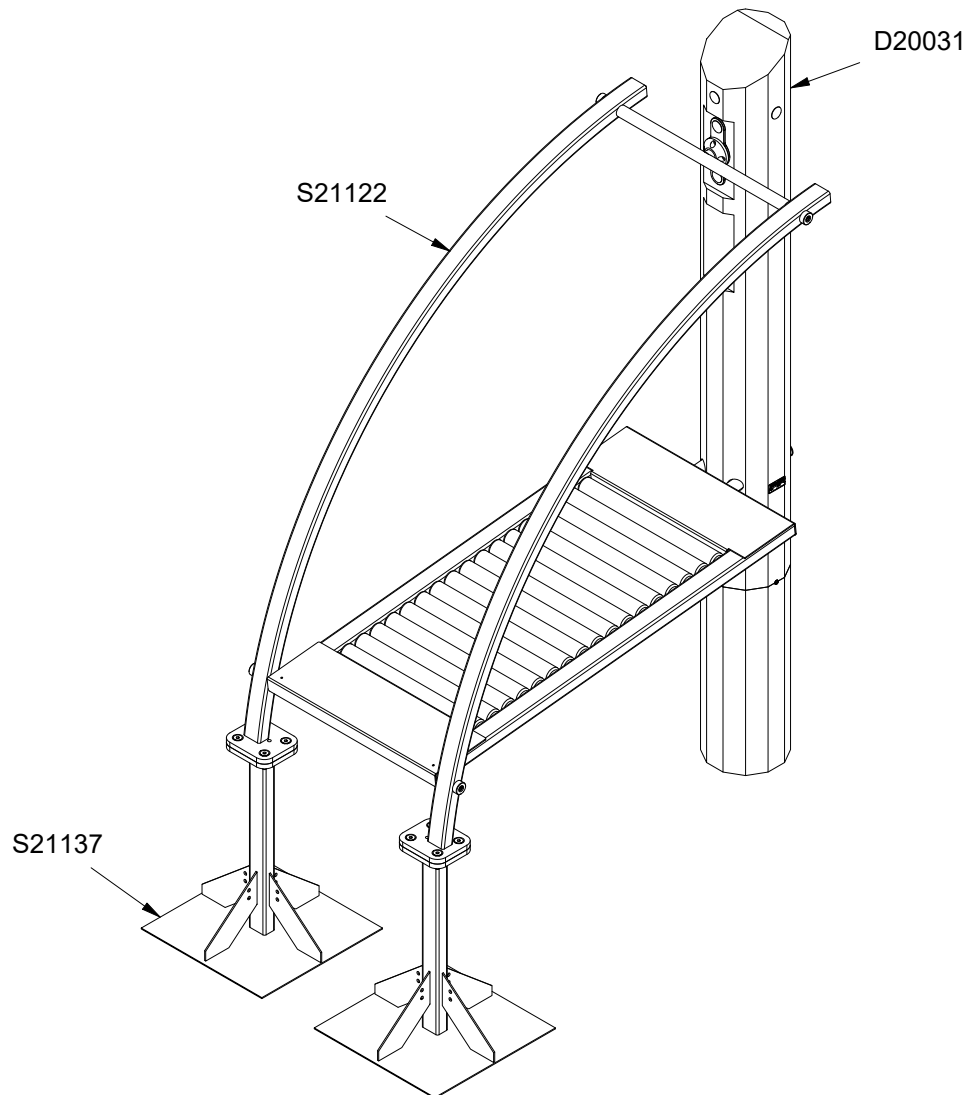
~169 kg

~0,14 m³

210 x 80 x 140 cm

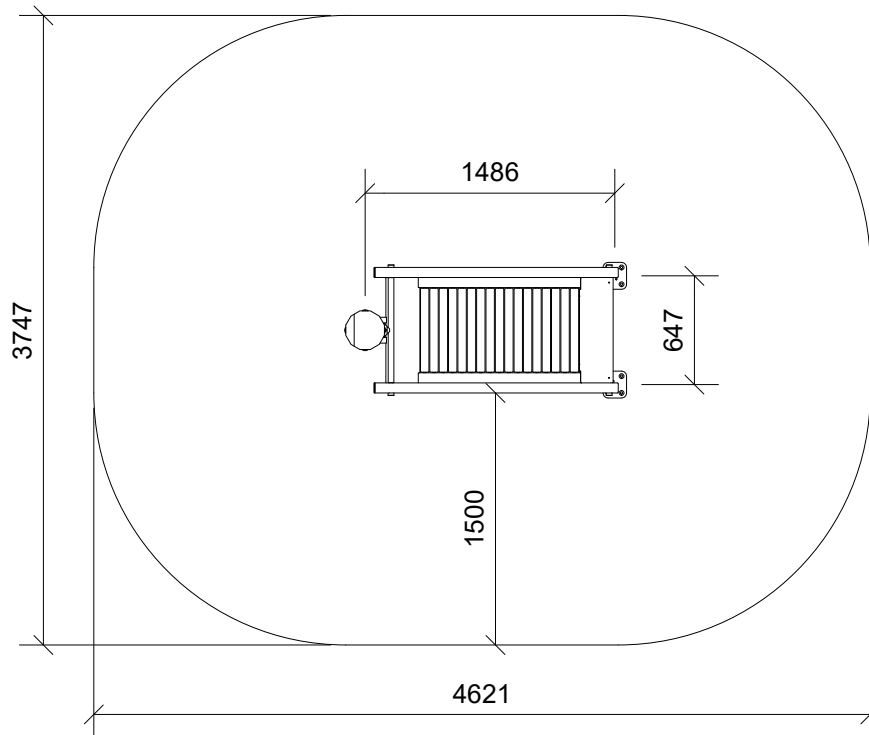
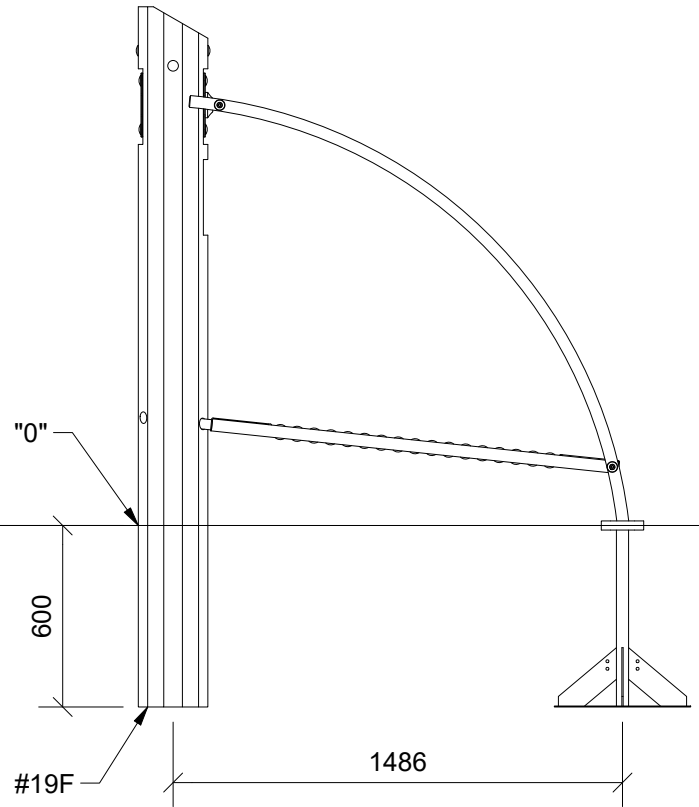
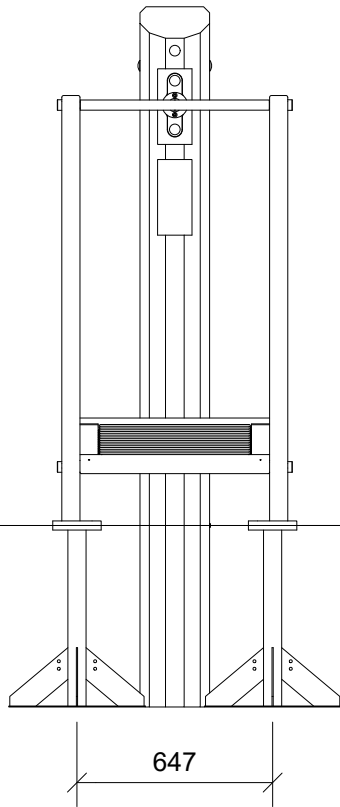


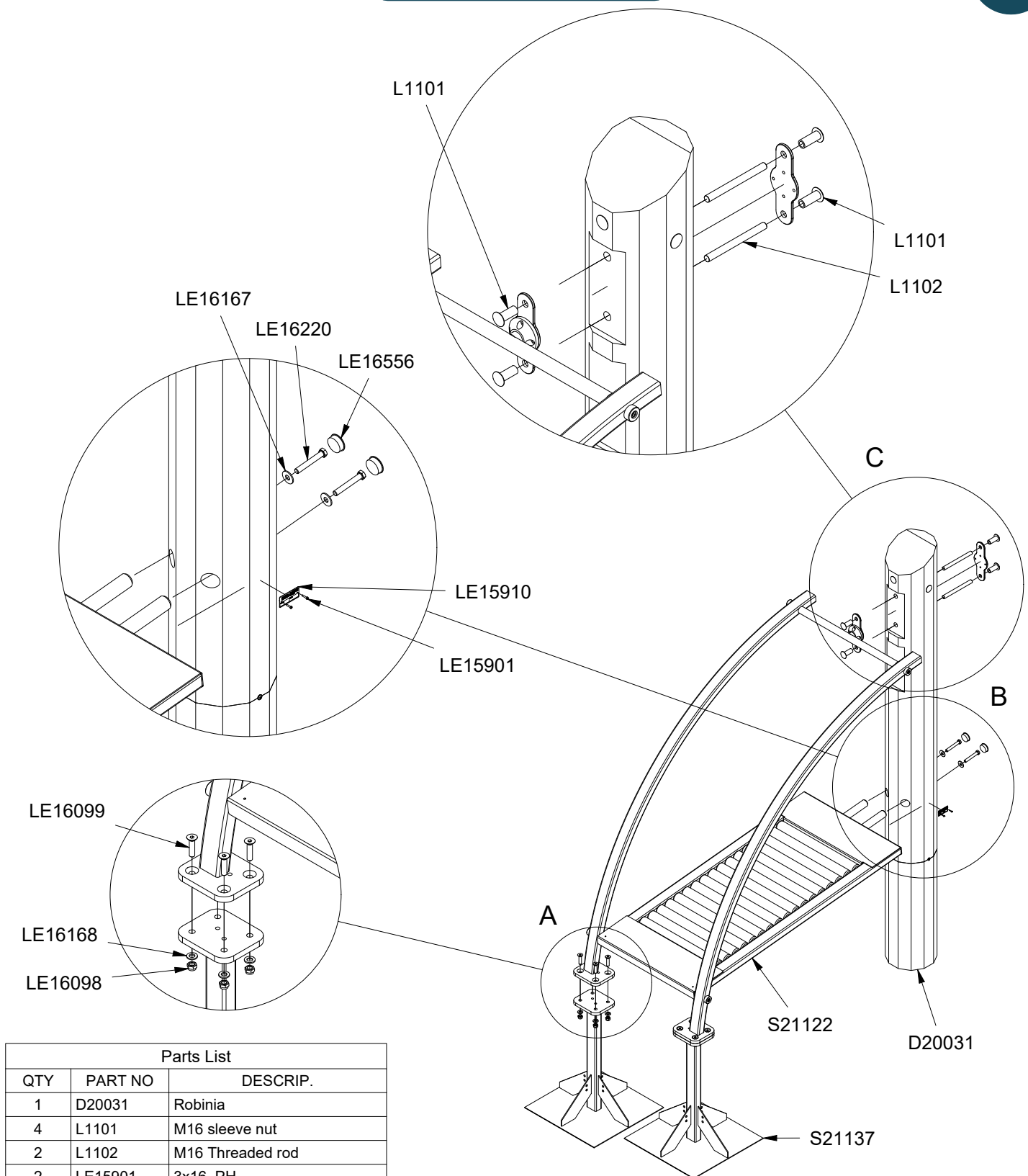
90 kg



Parts List

QTY	PART NO	DESCRIP.
1	D20031	Robinia
4	L1101	M16 sleeve nut
2	L1102	M16 Threaded rod
2	LE15901	3x16, PH
1	LE15910	Name tag
8	LE16098	M12x1,25mm nut
8	LE16099	M12x50
2	LE16167	M12 - Ø32 mm
8	LE16168	M12 - Ø24 mm
2	LE16220	M12x80
2	LE16556	Ø42/38mm
1	LE16599	Sealtite 970 1,5ml
1	S21122	RunFit
1	S21137	Installation frame





Parts List

QTY	PART NO	DESCRIP.
1	D20031	Robinia
4	L1101	M16 sleeve nut
2	L1102	M16 Threaded rod
2	LE15901	3x16, PH
1	LE15910	Name tag
8	LE16098	M12x1,25mm nut
8	LE16099	M12x50
2	LE16167	M12 - Ø32 mm
8	LE16168	M12 - Ø24 mm
2	LE16220	M12x80
2	LE16556	Ø42/38mm
1	LE16599	Sealtite 970 1,5ml
1	S21122	RunFit
1	S21137	Installation frame

