

Presto CC50

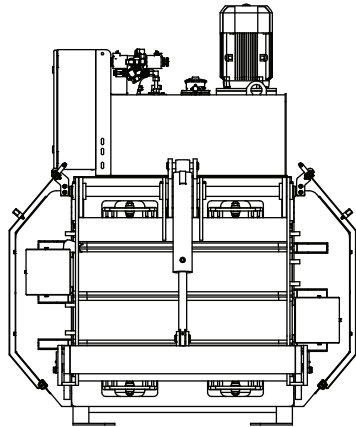
Horizontal Manual-Tie Baler

Experience reliability and simplicity with the CC50 Horizontal Manual-Tie. This versatile baler offers a range of feeding options to suit your needs, including our innovative cantilevered tipper, designed for ease of use and efficient breakdown of materials. Additionally, you can choose from mobile tippers, stationary tippers, or traditional hand feeding methods. Secure your bales effortlessly with the three-point Quick Link wire system, ready for fast and effective binding.

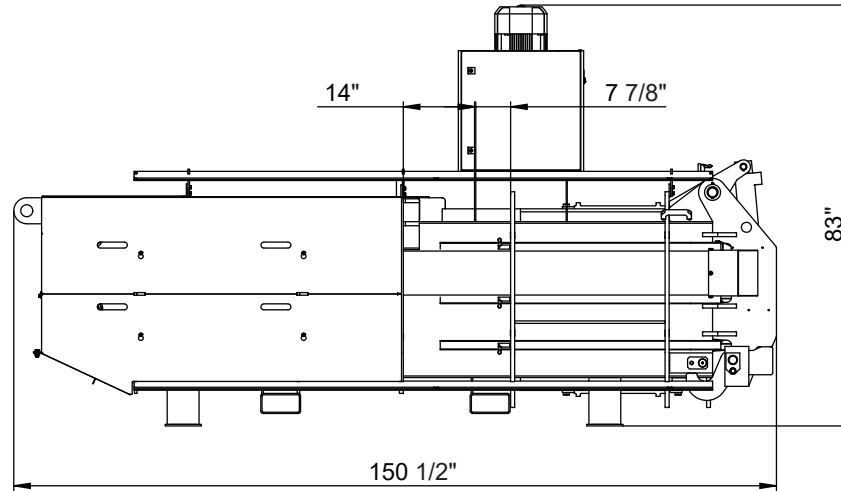
Advantages and features

- **Innovative Hydraulic Cylinder Placement:** Ensures a compact and efficient design, maximizing space utilization.
- **Quiet and Low-Wear Operation:** Features elongated nylon wear pads to ensure silent and durable performance.
- **Efficient Bale Ejection:** Uses a walking floor and ceiling for smooth, consistent ejection of finished bales through the hydraulic door.
- **Consistent Bale Quality:** The system's blade and counter-blade mechanism guarantees quality, high-density bales.
- **Intuitive PLC System:** Equipped with a user-friendly touch panel, allowing for easy adjustment and setting of key operational parameters.

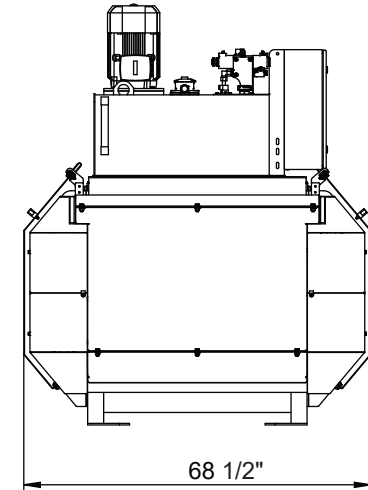




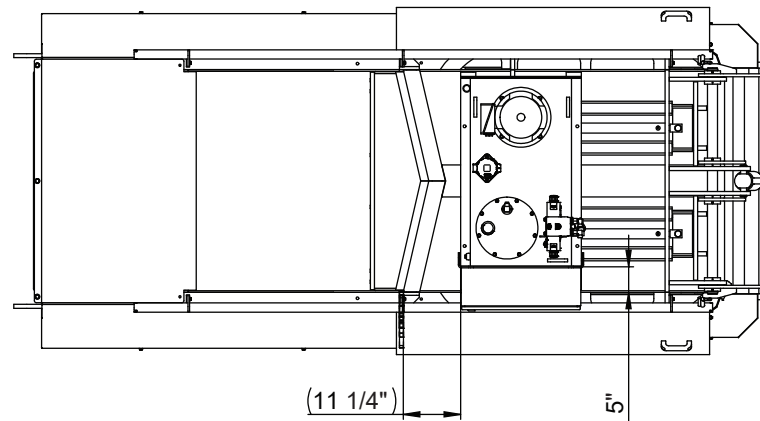
Front View



Right Side Profile



Back View



Top View

Technical specifications

Machine Dimensions (L X W X H Inches)	151 x 69 x 83
Space Required (L X W Inches)	210 x 111
Feed Opening (L X W - Inches)	41 x 44
Max Weight Throughput (Material Density 2 LBS/FT ³)	Up to 1 ton/HR
Bale Dimensions (Inches)	60 x 45 x 30
Number of Bale Wires	3
Bale Weight (LBS) OCC	900-1,200

BRAMIDAN[®]
bramidanUSA.com

Bramidan US, Inc.

HQ Chicago, IL office - phone 312 261 6006
San Antonio, TX office - phone 210 421 6412
USA@bramidan.com